

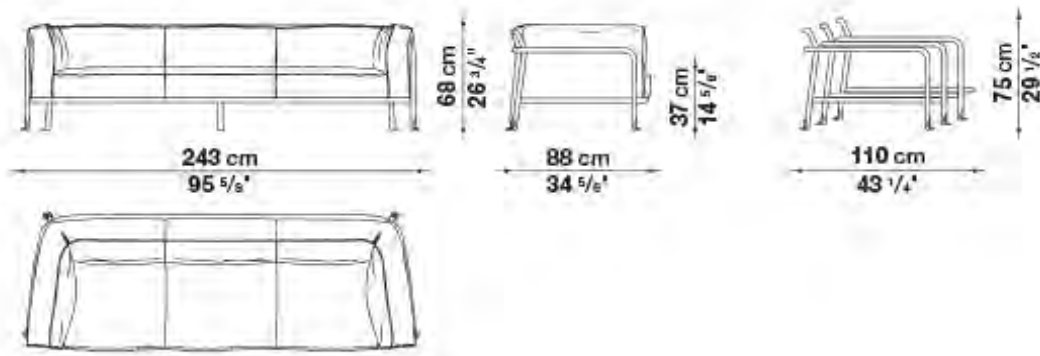
Borea

DESIGNED BY PIERO LISSONI

Borea is a complete and eclectic collection of outdoor seats and tables designed by Piero Lissoni. The numerous pieces in the collection have in common tubular metal structures with a fluid and seamless design, without joints and interruptions, captivating and even emerging in the detail that extends to the base. The metal bending processes take advantage of techniques typically used in the aeronautical sector and transport them into the world of outdoor furniture bringing life to a collection with an unmistakable style. The collection includes two- and three-seater sofas, an oversized armchair, a low small armchair and a dining chair, all with stackable aluminum structures painted. Comfort is ensured by generous cushions, which are not only soft and relaxing but were also developed to be sustainable. Paddings are in fact made with polyester fiber filling coming from recycled PET plastic bottles enveloping a different densities polyurethane core. 510 1500 ml bottles are needed to create the padding for a Borea three-seater sofa, 390 bottles for the twoseater sofa, 280 for the armchair.

Comes with:
OFW48x48 - 45x45cm optional cushions (x2)

BE243



Seat & Back cushion:
Solano 810



Profile:
Blue color



Optional cushions:
Aliseo 102



Frame: 0236B
Anthracite painted

3-Seater Sofa
(waterproof cover included)
\$15,124



Ayana

DESIGNED BY NAOTO FUKASAWA

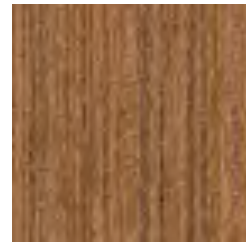
Minimalist and innovative, the Ayana collection becomes a new chapter in the story that connects B&B Italia to Naoto Fukasawa. It sees wood as the protagonist, interpreted in an unusual way, with a pleasant oriental touch.

If the depths and heights are a clear reference to the south-east Asian tradition, the backrest recalls a Swedish wall bar, an exercise equipment turned into a load-bearing element. Thanks to this solution, the elements of the Ayana collection can be enjoyed and appreciated at 360 degrees, discovering on each side a new elegant interplay of intersections and proportions. Two and three seat sofas and the armchair have armrests at different heights.

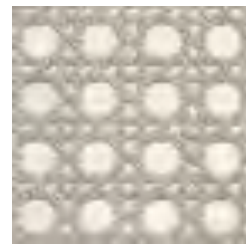
The armchair armrest is higher to guarantee a more ergonomic seat. The sofa armrest, which is lower, can be combined with a cushion that is easy to be fastened and removed, and helps to lie down more comfortably if necessary. The upholstery of this collection stands out for the individual cushions, all covered with waterproof fabrics.

Ayana is a project with a green soul.

The teak used to make the structures is FSC certified (Forest Stewardship Council) and all the materials that make up the various elements of the series, at the end of the product's life cycle, can be separated and disposed of with respect for the environment.

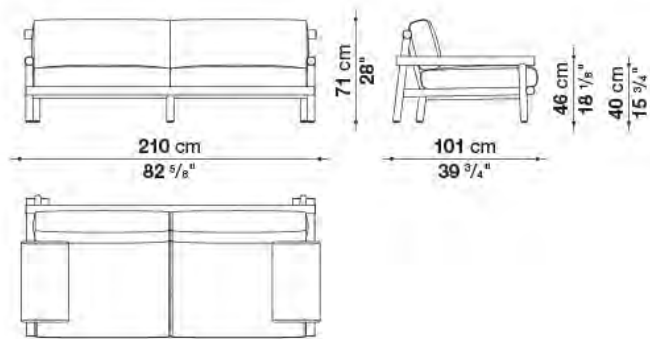


0456T
natural teakwood



Linaria 207

AY210



Sofa (waterproof cover included)
"Limited Quantities"
\$11,317



Canasta'13

DESIGNED BY PATRICIA URQUIOLA

Canasta '13 is given a tortora melange makeover with the new polyethylene fibre, creating an interlacing that evokes the Crinoline collection.

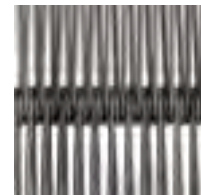
Comes with:
 three 25 5/8" x 25 5/8" cushions
 two 18 7/8" x 18 7/8" cushions
 one 21 5/8" x 15 3/4" cushion



Seat cushion:
Sirocco 253



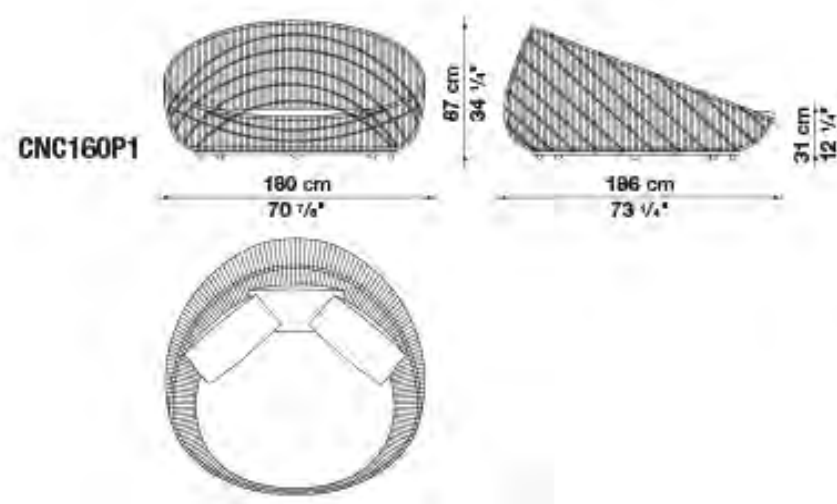
Large & medium back cushions:
Lipari 407



Interlacing:
Tortora



Small cushions:
Lipari 911



Round sofa
 (waterproof cover included)
 \$12,454



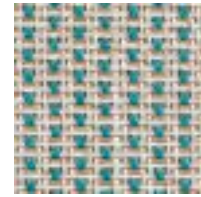
Gio

DESIGNED BY ANTONIO CITTERIO

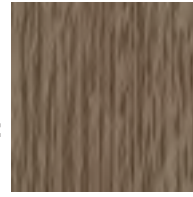
Gio, designed by Antonio Citterio, is the new series with a contemporary classic accent dedicated to living in the open air.

A complete range of sofas, end units, chaiselongue, sunbeds, armchairs, chairs, tables and complements which have been developed from solid teak structures with a special antique grey finish, which gives the wood a particular lived-in aspect and silver-grey reflective quality.

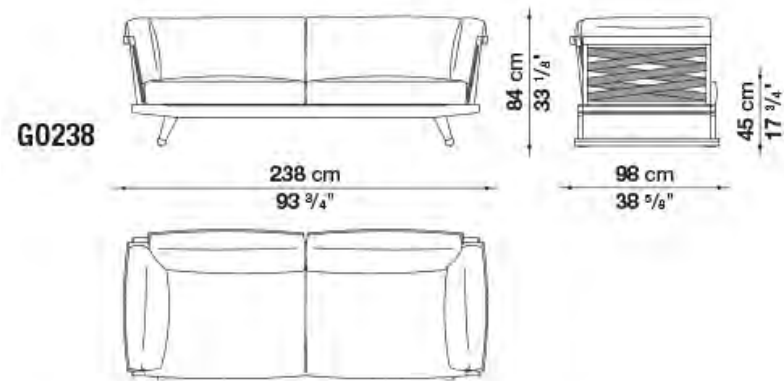
Through the quick ship program the linear sofa 238 cm and the rectangular small table 120 cm are available.



Seat cushion:
Elisir 420

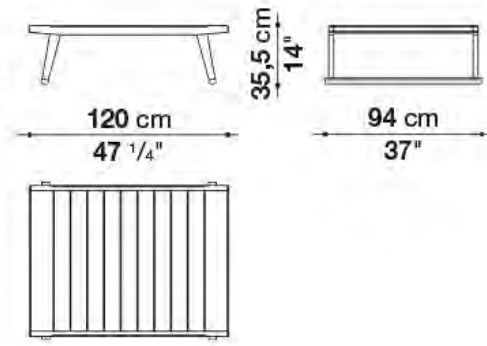


Frame: 0492T
Antique
Teakwood



G0238

TG012



Sofa (waterproof cover included)
"Limited quantities"
\$15,051



Coffee table (waterproof cover included)
"Limited quantities"
\$3,004



Hybrid

DESIGNED BY ANTONIO CITTERIO

After the great success of Ribes, Antonio Citterio developed some design ideas behind it and created Hybrid, an innovative new system of modular seating elements that it is so versatile it can be arranged into an almost infinite number of combinations. The key role of the textile dimension stands out immediately, with upholsteries that cover completely the generous padding, the absolute protagonist. These are typical elements of indoor furnishings, which find with Hybrid an outdoor interpretation. Hence the name of the collection, which is proposed as a real link between the inside and the outside of the house.

Hybrid represents in fact the perfect furnishing element for climates and spaces that are defined by a continuous blend of inside and outside environments, with rooms that open to an en-plein-air dimension, and for living spaces integrated into terraces and gardens.

The combination of opposites happens not only visually, but also through the sense of touch. Hybrid guarantees in fact the typical comfort of traditional upholstered furniture for interiors, thanks to a new type of mattress seat conceived for outdoor furnishing.

The cushions are actually made with paddings with different densities, carefully designed to pleasantly accommodate the new compositions.

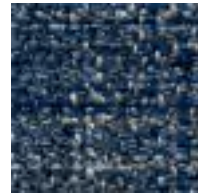
body and support it at the same time, without sinking. The supporting structures are almost invisible, and the seat seems to float a few centimeters above the floor. The solid base is formed by a frame in extruded aluminum painted in the colours sage, clay and anthracite, and is completed by a platform with fiberglass slats. The backrest conceals an aluminum structure, covered with soft polyurethane, which is in turn covered with a padded sheath, completed with a cover in waterproof fabric.

The platform is available in eight sizes and two depths, while the armrest and backrest come in two heights. To guarantee further comfort to the deeper seat, the low backrest can be raised with an additional headrest cushion. Additional cushions in various sizes enrich the range, offering countless design and chromatic solutions. The Hybrid collection also includes a series of new outdoor fabrics made with mélange polypropylene yarn in five colour variants that are accented by refined trims. Choices that confirm a decisive and elegant presence for interiors and outdoor spaces.

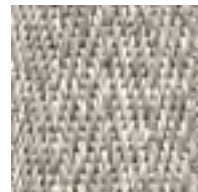
All the objects in the Hybrid collection can be dismantled completely. At the end of the life cycle, each individual element can be separated and disposed of following the path best suited to each material.



Sofa:
Saturno 258



Sofa:
Saturno 800



Profile:
0082N natural

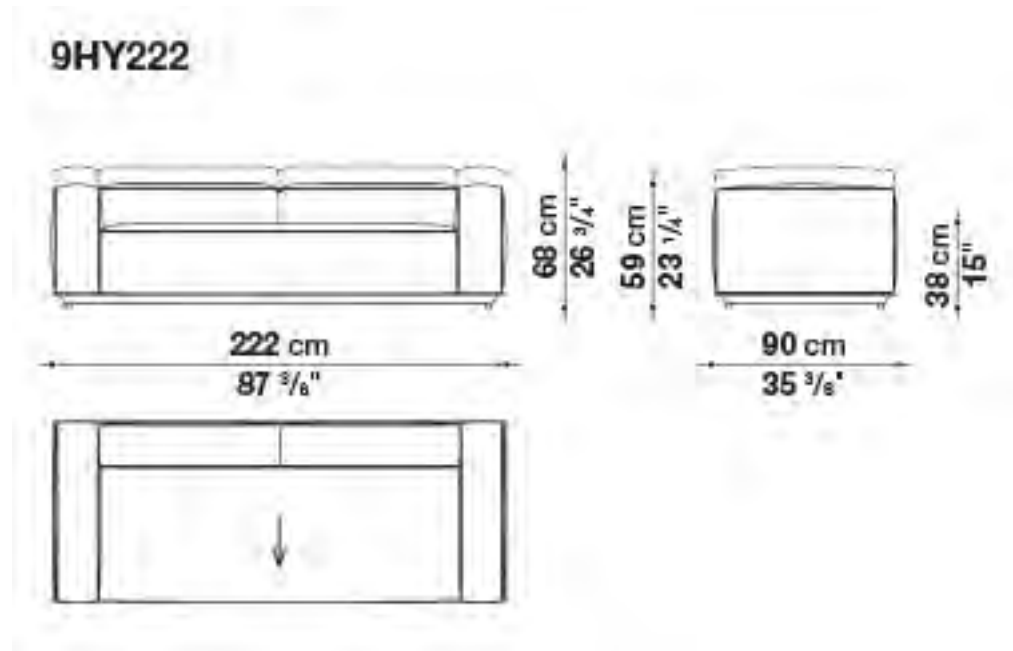


Frame: 0236B
anthracite painted



Hybrid

DESIGNED BY ANTONIO CITTERIO



Sofa
(waterproof cover included)
Grey Saturno 258
\$13,973



Sofa
(waterproof cover included)
Blue Saturno 800
\$13,973

Ray Outdoor Fabric

DESIGNED BY ANTONIO CITTERIO

Ray Outdoor Fabric features an interlacing ribbon pattern, created using polypropylene fibre that are resistant to UV rays and weathering. The range of colours, particularly suitable for outdoor environments, varies from turquoise to blue and from acid green to tortora through bright Bordeaux.

The collection consists of sofas available in two depths as well as modular elements such as terminal elements or chaise longue and armchairs. Ray fabric left/right sectional sofas with interlacing are available through this program.



Back & Seat:
Silea 280



Optional cushions
48x48: Loreo 100



Optional cushions
55x40: Silea100

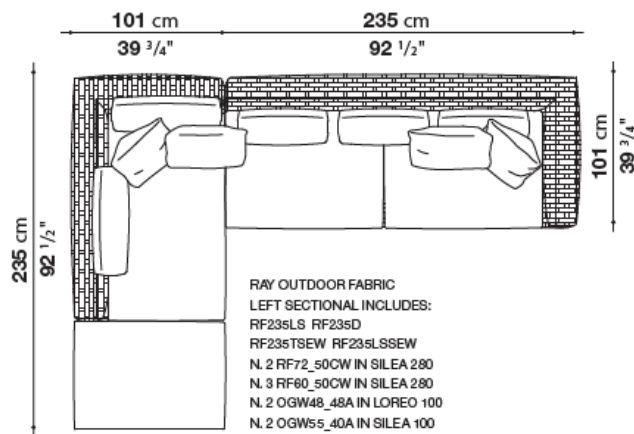


0428T
Tortora Interlacing

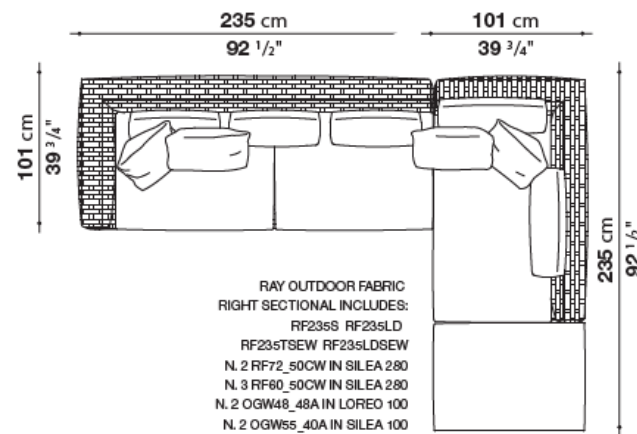


Frame: 0236B
athracite painted

Left Sectional: RF235LS + RF235D



Right Sectional: RF235S + RF235LD



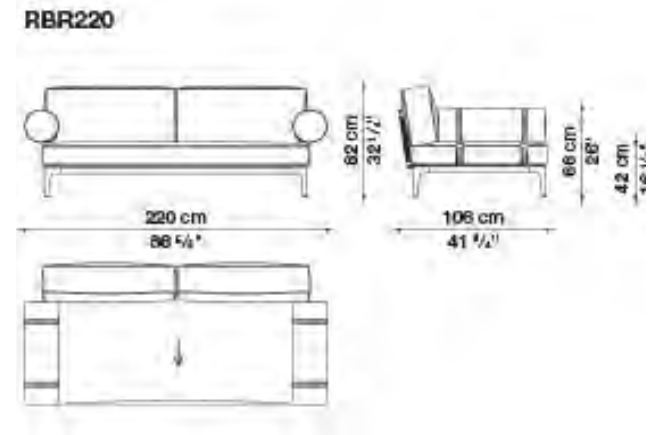
Sofa
(waterproof cover included)
\$26,726

Ribes

DESIGNED BY ANTONIO CITTERIO

Ribes is the new modular seating system designed by Antonio Citterio with a focus on versatility, customisation, colour and research on materials.

Ribes Linear, comes with:
2 optional cushions (pillow style) RB48_48



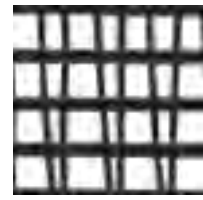
Back cushion:
Elisir 110



Frame:
0236B
athracite
painted



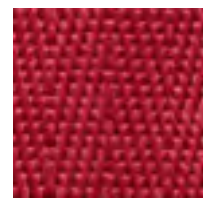
Seat cushion:
Elisir 115



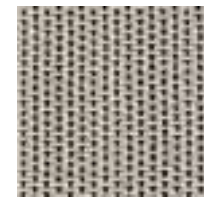
Interlacing:
0132N
anthracite
polypropylene



Throw pillows:
Elisir 207



Profile:
0075R
red color



Roller:
Elisir 120



Straight Sofa
(waterproof cover included)
"Limited quantities"
\$13,291



Ribes

DESIGNED BY ANTONIO CITTERIO

Ribes is the new modular seating system designed by Antonio Citterio with a focus on versatility, customisation, colour and research on materials.

Ribes sectional, comes with:
 x2 optional cushions (pillow style) RB60_60
 x2 optional cushions (pillow style) RB48_48



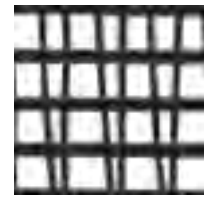
Back & seat cushion:
 Elisir 115



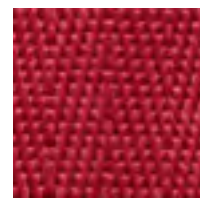
Frame:
 0236B
 anthracite painted



Throw pillows:
 Elisir 207

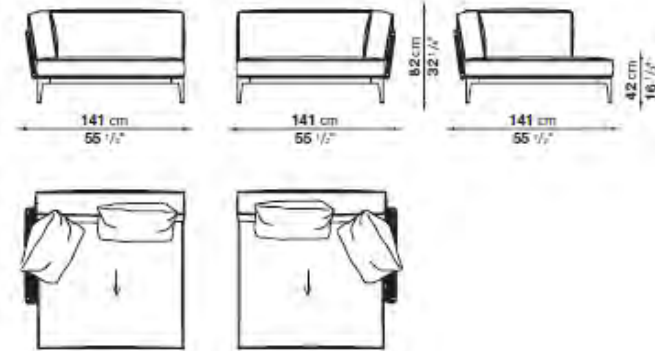


Interlacing:
 0132N
 anthracite polypropylene

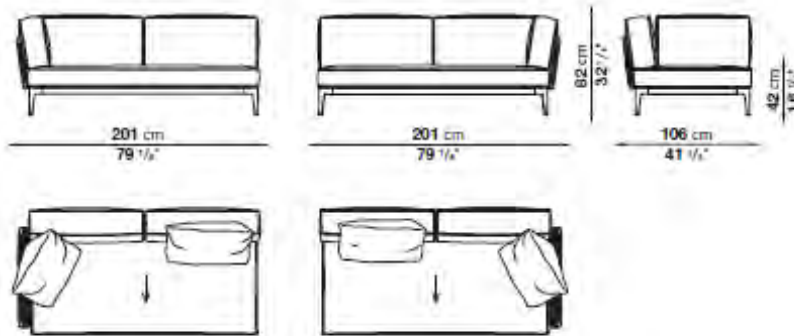


Profile:
 0075R
 red color

Ribes Sectional
 RB141LB_3



RB201T_3



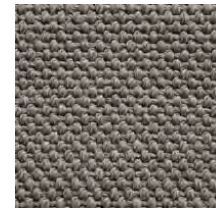
Sectional Sofa
 (waterproof cover included)
 "Limited quantities"
 \$20,959



Fat

DESIGNED BY Patricia Urquiola

The Fat-Sofa Outdoor collection stands out for its rounded, soft and sinuous shapes, echoing the features of the indoor system of the same name. Its fully padded seat is accompanied by a back with a metal frame that supports the original weave, made of dove grey coloured twisted polyethylene fibres. A technique with a graphic effect and macro dimensions that make the design unique, respecting the designer's idea of lightness and transparency, and putting the furnishings in an open "dialogue" with the surrounding environment. The Fat-Sofa Outdoor collection consists of an in-line sofa in two sizes and a large relaxing seat. The series is complemented by an armchair with backrest in two heights and different sized ottomans.



Back & seat cushion:
Lesia 251

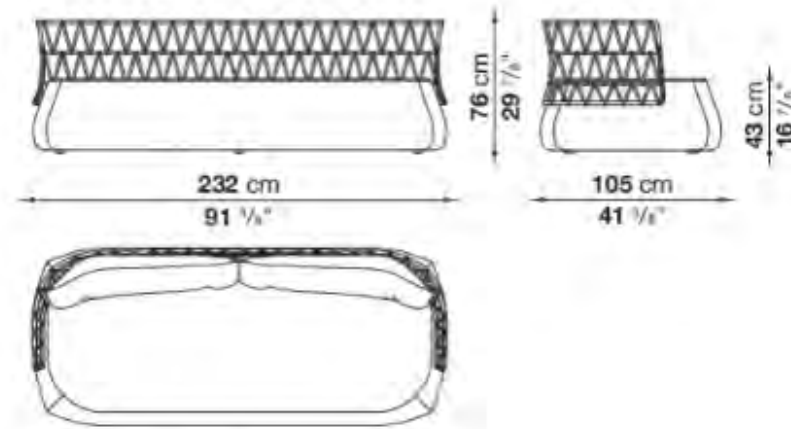


Frame:
0612T
Dove Grey
Polyethylene
Interlacing



Throw pillows:
Lipari 911

FA230



Fat Sofa sectional, comes with:
x2 optional cushions (pillow style) OGW48_48
x1 optional cushions (pillow style) OGW48_48



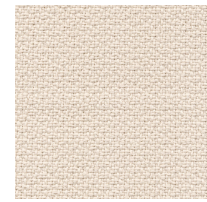
Sofa
\$12,945



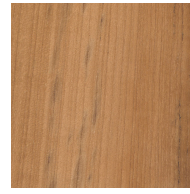
Pablo

DESIGNED BY VINCENT VAN DUYSSEN

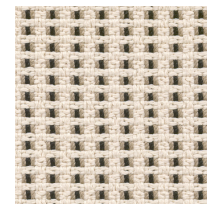
The Pablo armchair by Vincent Van Duysen, with its decisive design and innovative proportions, is available in an outdoor version, breathing life into a series that includes an armchair in two depths, sofa, and footrest. The soul of the original project lies in the wood frame, which for Pablo Outdoor is made of teak, the ideal material for outdoors. The geometry of the supporting frame presents a sophisticated balance of straight and curved lines, but this is not just an aesthetic choice. In fact, the frame, with its uninterrupted surface, was designed to ease maintenance of the wood, which is easy to treat as necessary. The rear fabric panels are anchored to rods that can be removed easily. This is also an aesthetic choice that meets a technical solution aimed at simplifying care for the wood and maintenance of the textile parts. These design expedients allow customers choosing the Pablo Outdoor collection to let it age naturally or have it returned its original condition. The continuity of the form and quality of the wood make Pablo Outdoor particularly pleasant to the touch. Comfort and softness are also found in the deep seat and back enhanced with cushions that can be arranged freely. The low seat is composed of a single generously upholstered cushion, nearly a mattress that creates an ample area perfect for isolating yourself or sharing moments of conviviality.



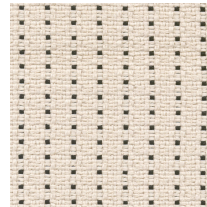
Seat cushion:
Lola 100



Frame: 0456T
Natural
Teakwood



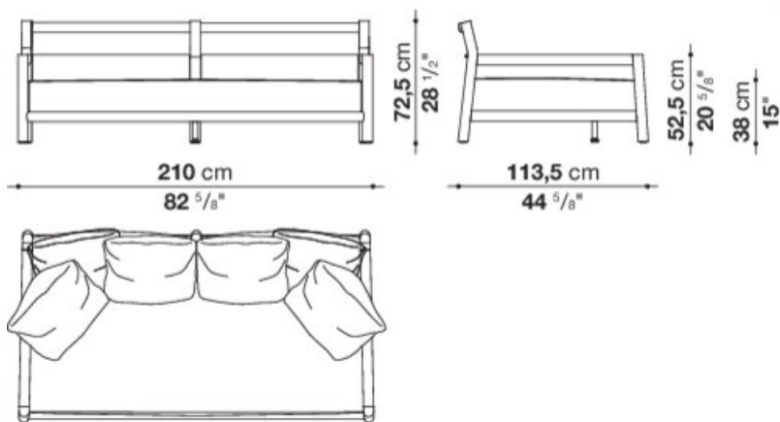
Cushion:
Lamone 275



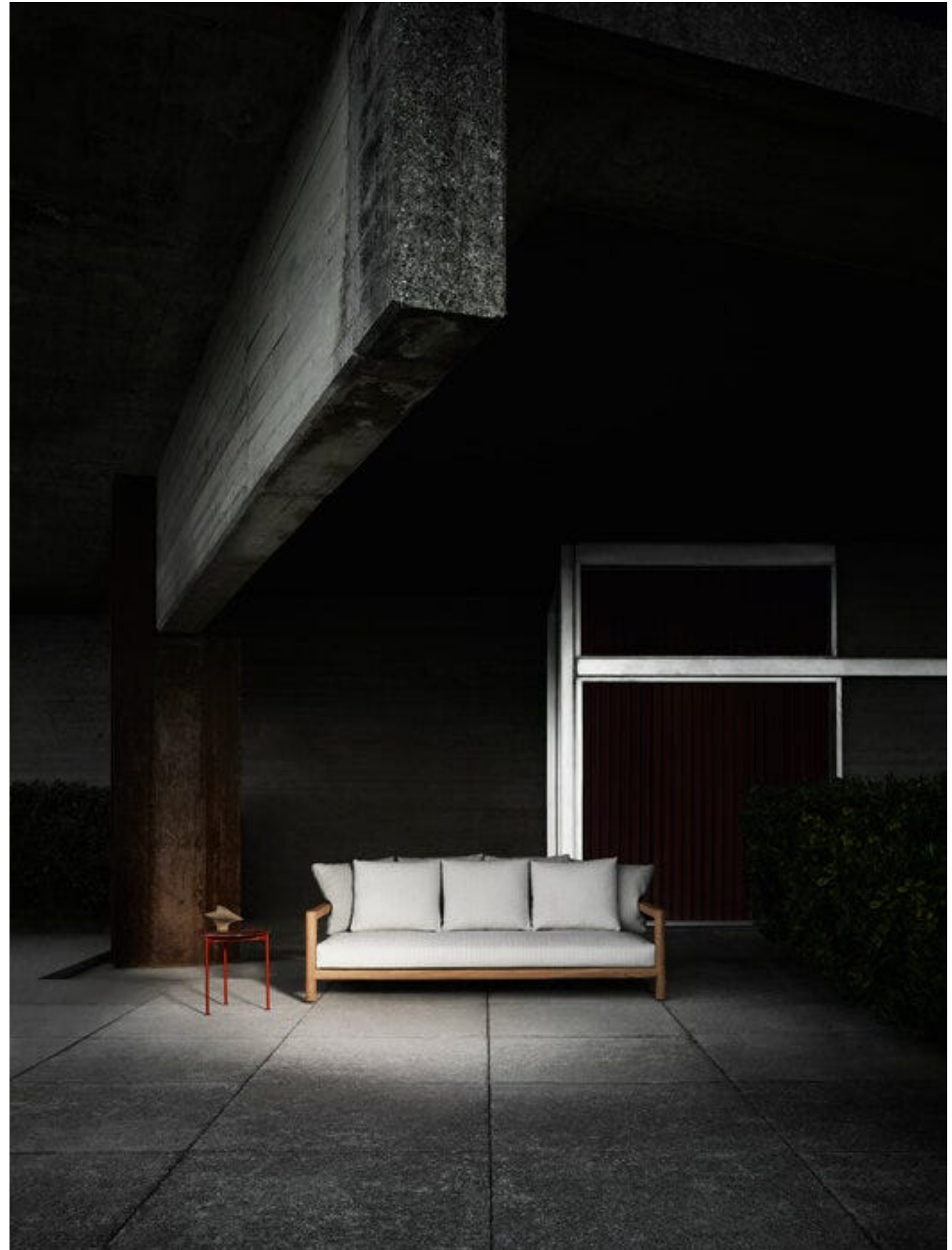
Cushion:
Lilia 111



PBL210



Sofa
\$15,239



Mirto Outdoor Chaise Lounge

DESIGNED BY ANTONIO CITTERIO

A classic is born. Different types of seating: armchairs, chairs and a chaise longue are included in the collection. The folding armchair revisits the classic shape of a movie director's chair, with special details. The mesh and metal parts are finished in two colours, white and tortora, creating two colorway options in a single colour. The table and small table have the same frame and top in painted aluminium and are available in select colors. The collection expresses Antonio Citterio's stable elegance.

"Set of small mattress, headrest cushion and cover is also available separately".



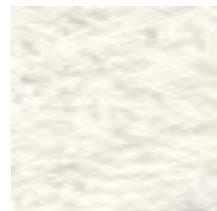
Stige tortora



Elide 100

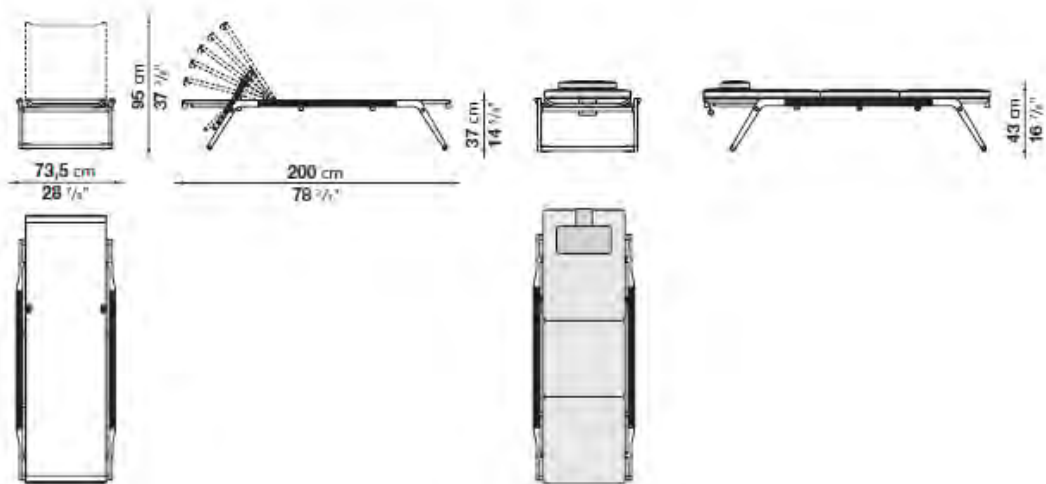


Stige natural white



Bali 100

MI200CL



**Chaise Lounge
(waterproof cover included)**

"Limited Quantities"

Bali - \$5,271

Tortora - \$5,271

**Mattress + Headrest Sold
Separately**

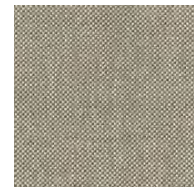
\$1,771



Crinoline

DESIGNED BY PATRICIA URQUIOLA

The Crinoline chairs and stools are characterised by a sophisticated polyethylene fibre interlacing with a surprisingly natural texture. The chairs are available in two versions: with a woven backrest combined with a bright stainless steel base and a fabric upholstered seat; or with an aluminium frame that supports the curved seat and back, as if to create an entirely interwoven double shell silhouette. The stools, in two heights, have a woven back, a bright stainless steel base and a fabric upholstered seat.



Seat & Back cushion:
Agate 287

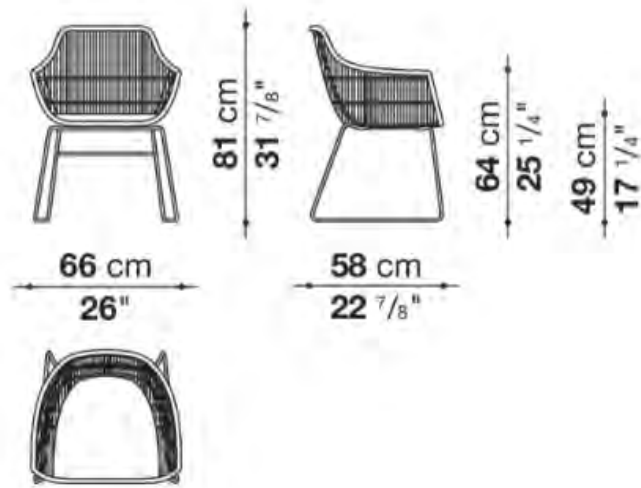


Seat & Back cushion:
Eos 280



Frame:
Tortora Frame

C2PF



Chair

Agate - \$2,235

Eos - \$2,270

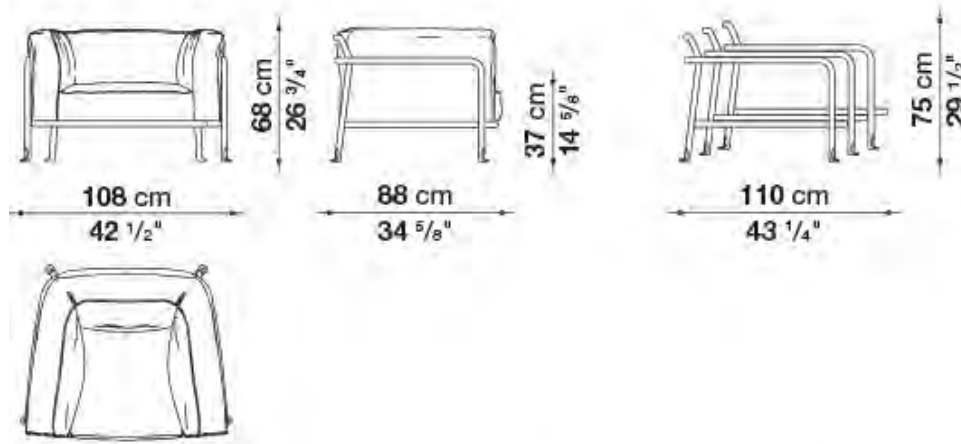


Borea

DESIGNED BY PIERO LISSONI

Borea is a complete and eclectic collection of outdoor seats and tables designed by Piero Lissoni. The numerous pieces in the collection have in common tubular metal structures with a fluid and seamless design, without joints and interruptions, captivating and even emerging in the detail that extends to the base. The metal bending processes take advantage of techniques typically used in the aeronautical sector and transport them into the world of outdoor furniture bringing life to a collection with an unmistakable style. The collection includes two- and three-seater sofas, an oversized armchair, a low small armchair and a dining chair, all with stackable aluminum structures painted. Comfort is ensured by generous cushions, which are not only soft and relaxing but were also developed to be sustainable. Paddings are in fact made with polyester fiber filling coming from recycled PET plastic bottles enveloping a different densities polyurethane core. 510 1500 ml bottles are needed to create the padding for a Borea three-seater sofa, 390 bottles for the two-seater sofa, 280 for the armchair.

BE108



Seat & Back cushion:
Solano 810



Profile:
Blue color



Frame: 0236B
Anthracite painted

Armchair
(waterproof cover included)
\$6,889



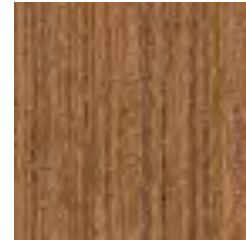
Ayana

DESIGNED BY NAOTO FUKASAWA

Ayana's warm minimalism is completed with a chair, a dining table and a low table. The dining chair recalls the stylistic features of the other seats, for a perfect family feeling, with the structure in natural teak wood and two generously padded cushions covered in fabric.

Ayana is a project with a green soul.

The teak used to make the structures is FSC certified (Forest Stewardship Council) and all the materials that make up the various elements of the series, at the end of the product's life cycle, can be separated and disposed of with respect for the environment.

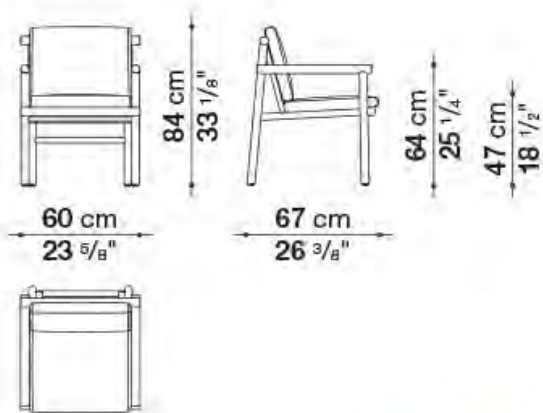


0456T
natural teakwood

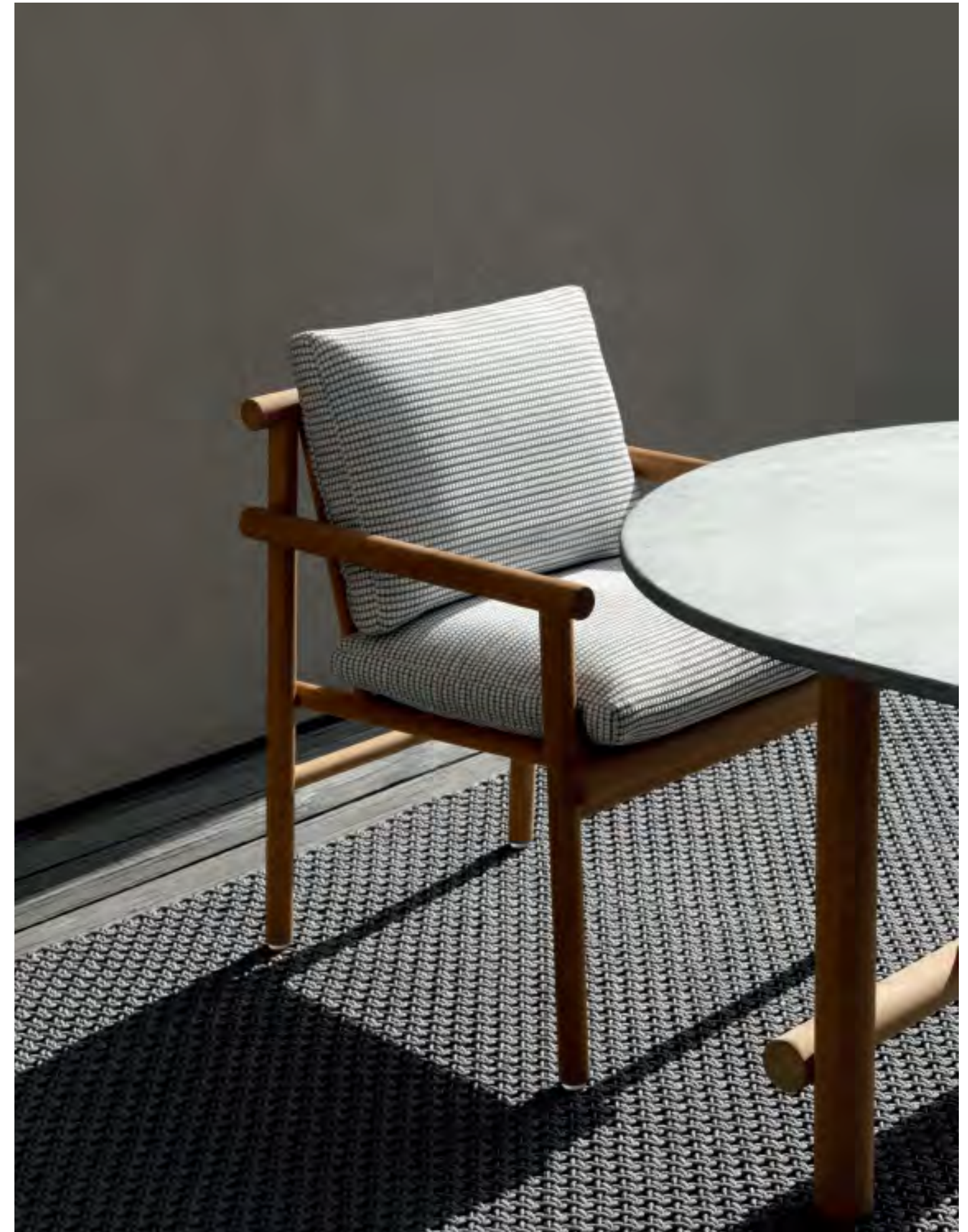


Liri 830

AY58S



Chair
(waterproof cover included)
"Limited Quantities"
\$2,767



Erica '19

DESIGNED BY ANTONIO CITTERIO

The Erica collection of sofas, armchairs and small chairs that was so successfully launched in 2017 has been enhanced by new sofas, still based on the same characteristic curved backrest and interlacing as before but offering a deeper seat and lived-in appearance.

The sofas come in three extra-comfortable sizes - the 170 cm and 216 cm styles with a 96 cm deep seat and the 153 cm version with a 140 cm seat - and the cushions have a different type of filling giving an even softer and more natural look and making them even more inviting.

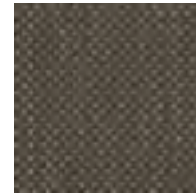
The unusual colour juxtaposition of frame and interlacing in anthracite, tortora or a frame in sage with natural-coloured interlacing can be complemented by a vast range of cushion covers, in an array of tones and designs, all co-ordinating with each other. There is also a chair with armrests with an brand new interlaced backrest.



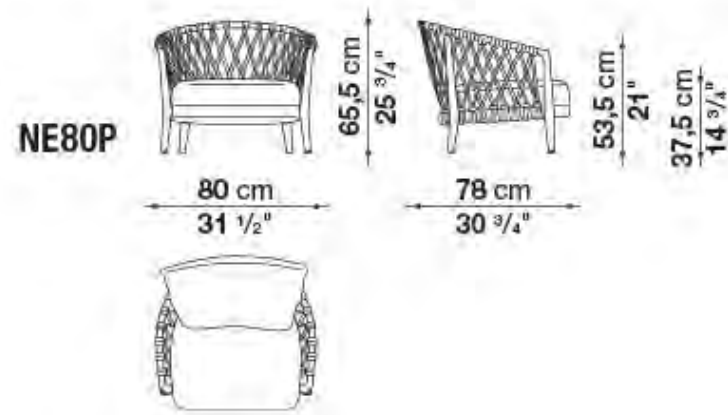
Frame:
0236B
anthracite painted



**polypropylene/
anthracite frame**



Seat & Back cushion:
Agate 153



Armchair - Cover Not Included

\$3,862



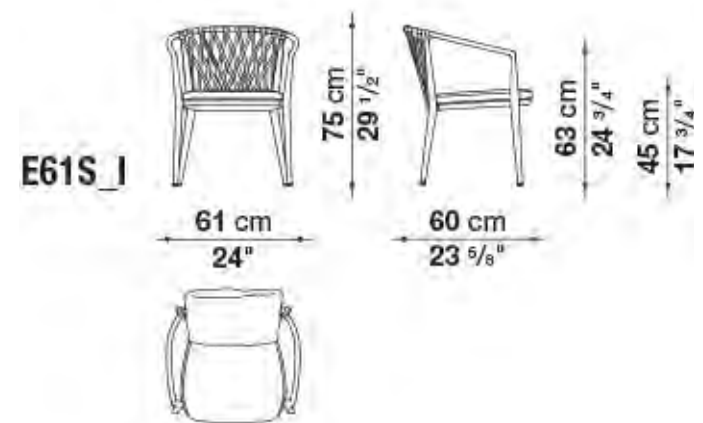
Erica

DESIGNED BY ANTONIO CITTERIO

The Erica collection of sofas, armchairs and small chairs that was so successfully launched in 2017 has been enhanced by new sofas, still based on the same characteristic curved backrest and interlacing as before but offering a deeper seat and lived-in appearance.

The sofas come in three extra-comfortable sizes - the 170 cm and 216 cm styles with a 96 cm deep seat and the 153 cm version with a 140 cm seat - and the cushions have a different type of filling giving an even softer and more natural look and making them even more inviting.

The unusual colour juxtaposition of frame and interlacing in anthracite, tortora or a frame in sage with natural-coloured interlacing can be complemented by a vast range of cushion covers, in an array of tones and designs, all co-ordinating with each other. There is also a chair with armrests with an brand new interlaced backrest.



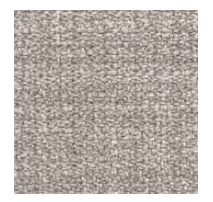
Frame:
0236B
 anthracite painted



polypropylene/
 anthracite frame



Seat & Back cushion:
Lesia 877



Seat & Back cushion:
Saturno151



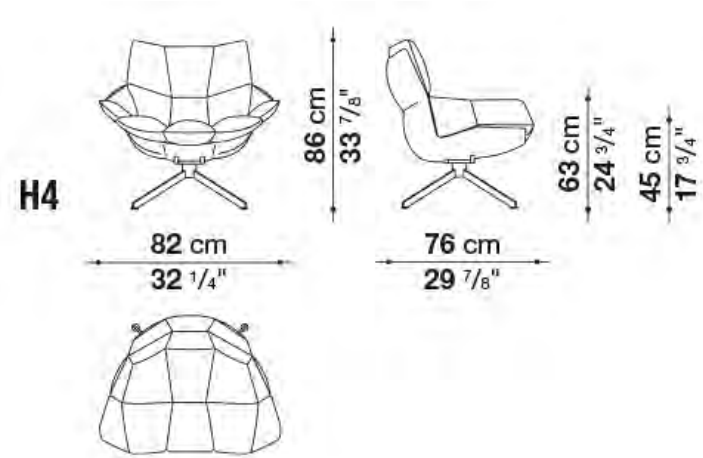
Dining chair
 (waterproof cover included)
 Lesia 877 - \$2,486
 Saturno 151 - \$2,411



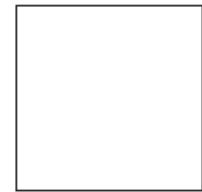
Husk Outdoor

DESIGNED BY PATRICIA URQUIOLA

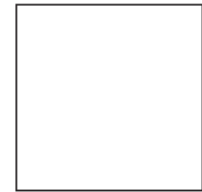
Husk Outdoor chairs feature a hard shell made of Hirek® and a soft cushion. The shell, along fixed seat support, is available in white.



Seat & Back cushion:
Eos 280



Back: white Hirek®
plastic material



Legs: 09010
white painted



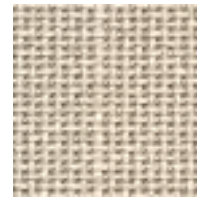
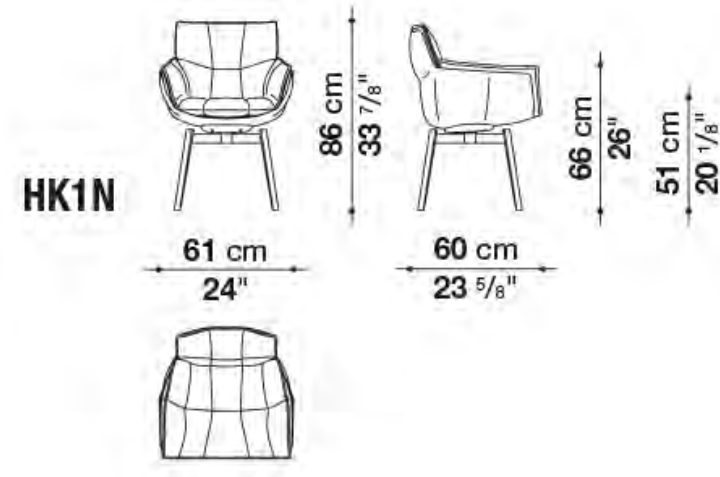
Armchair
(waterproof cover included)
"Limited quantities"
\$3,648



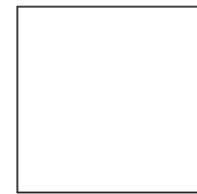
Husk Outdoor

DESIGNED BY PATRICIA URQUIOLA

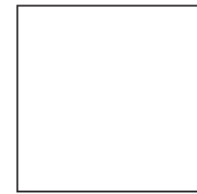
Husk Outdoor chairs feature a hard shell made of Hirek® and a soft cushion. The shell, along fixed seat support, is available in white.



Seat & Back cushion:
Elisir 207



Back: white Hirek®



Legs: 09010
white painted



Dining Chair
(waterproof cover included)
\$2,133



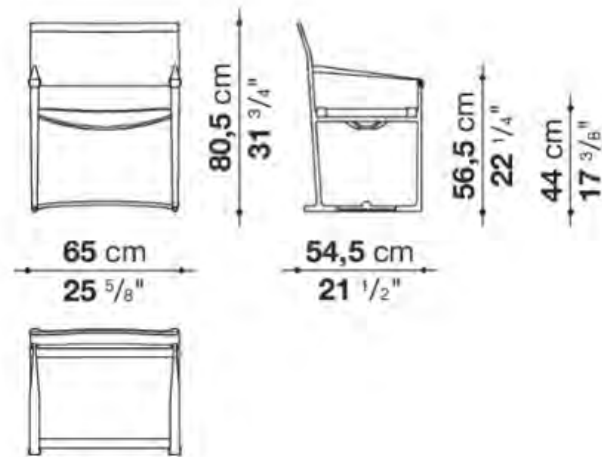
Mirto Outdoor

DESIGNED BY ANTONIO CITTERIO

Timeless, resistant and durable, both from a formal and a physical point of view, the Mirto Outdoor chairs express an elegance that transcend time and fashions. They come in a fixed version, with or without armrests, and in a folding version, reinterpreting the classic director's chair. They feature a light aluminium frame and a seat and back in Batyline® Canatex mesh, whose hemp fibre confers a surprisingly natural look compared to the plastics usually used in this sector. The edges are expertly cut, sewn and glued around the profiles to create a minimalist décor. Mirto Outdoor is a complete series of outdoor furniture inclusive of chairs, armchairs, loungers, dining tables and furnishings.



MI65P



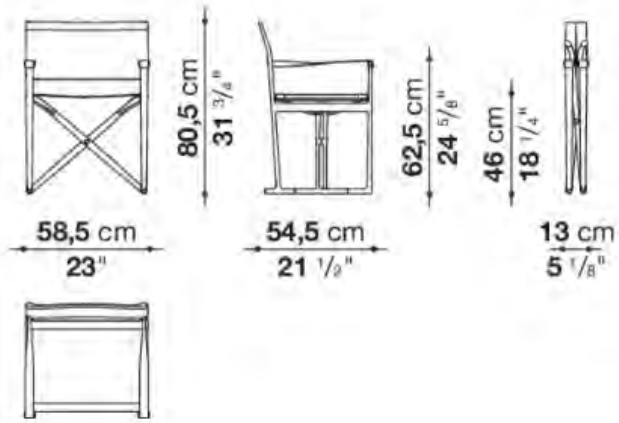
Armchair
MI65P - \$2,065



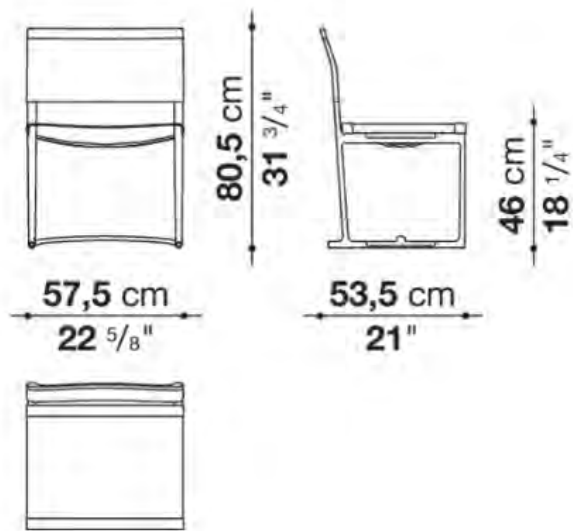
Mirto Outdoor

DESIGNED BY ANTONIO CITTERIO

MI59SR



MI58S



Armchair

MI59SR - \$2,153

MI58S - \$1,891



Pablo Outdoor

DESIGNED BY VINCENT VAN DUYSSEN

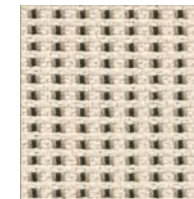
The Pablo armchair by Vincent Van Duysen, with its decisive design and innovative proportions, is available in an outdoor version, breathing life into a series that includes an armchair in two depths, sofa, and footrest. The soul of the original project lies in the wood frame, which for Pablo Outdoor is made of teak, the ideal material for outdoors. The geometry of the supporting frame presents a sophisticated balance of straight and curved lines, but this is not just an aesthetic choice. In fact, the frame, with its uninterrupted surface, was designed to ease maintenance of the wood, which is easy to treat as necessary. The rear fabric panels are anchored to rods that can be removed easily. This is also an aesthetic choice that meets a technical solution aimed at simplifying care for the wood and maintenance of the textile parts. These design expedients allow customers choosing the Pablo Outdoor collection to let it age naturally or have it returned its original condition. The continuity of the form and quality of the wood make Pablo Outdoor particularly pleasant to the touch. Comfort and softness are also found in the deep seat and back enhanced with cushions that can be arranged freely. The low seat is composed of a single generously upholstered cushion, nearly a mattress that creates an ample area perfect for isolating yourself or sharing moments of conviviality.



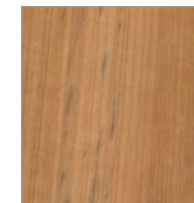
Cover:
Laguna 102



Seat Cushion:
Lilia 111

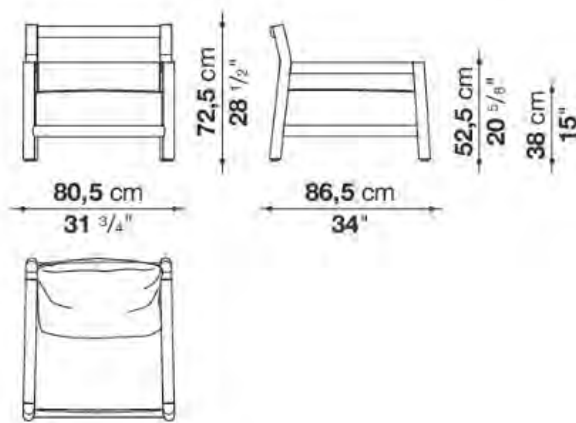


Back Cushion:
Lamone 275



Frame: 0456T
Natural Teakwood

PBL80



Armchair
(waterproof cover included)
\$6,160

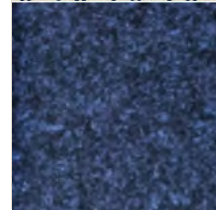
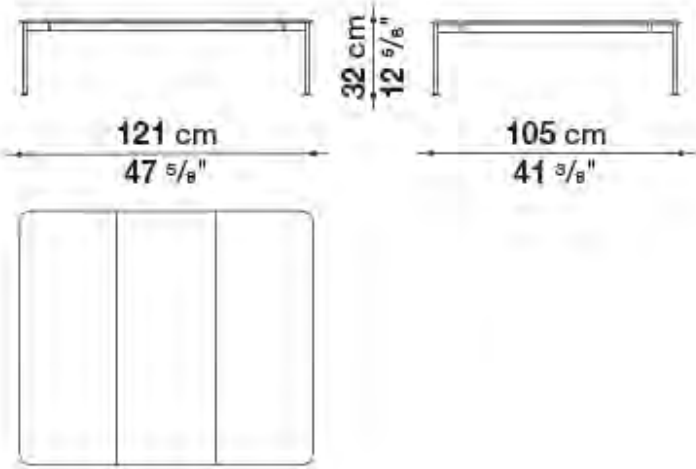


Borea

DESIGNED BY PIERO LISSONI

Borea is a complete and eclectic collection of outdoor seats and tables designed by Piero Lissoni. The numerous pieces in the collection have in common tubular metal structures with a fluid and seamless design, without joints and interruptions, captivating and even emerging in the detail that extends to the base. The metal bending processes take advantage of techniques typically used in the aeronautical sector and transport them into the world of outdoor furniture bringing life to a collection with an unmistakable style. The collection includes two- and three-seater sofas, an oversized armchair, a low small armchair and a dining chair, all with stackable aluminum structures painted. Comfort is ensured by generous cushions, which are not only soft and relaxing but were also developed to be sustainable. Paddings are in fact made with polyester fiber filling coming from recycled PET plastic bottles enveloping a different densities polyurethane core. 510 1500 ml bottles are needed to create the padding for a Borea three-seater sofa, 390 bottles for the twoseater sofa, 280 for the armchair.

TBE121



Top: 0097B
Ocean blue
enameled lava stone



Frame: 0236B
Anthracite painted

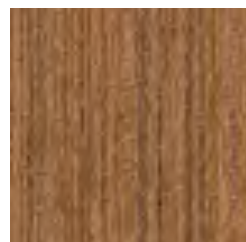
Coffee table
(waterproof cover included)
\$7,198



Ayana

DESIGNED BY NAOTO FUKASAWA

The table stands out for its oval top in serpentine, a typical stone of the Alps. The supporting structure in natural teak appears light but is extremely robust, able to resist weather and support the heavy top. Ayana is a project with a green soul. The teak used to make the structures is FSC certified (Forest Stewardship Council) and all the materials that make up the various elements of the series, at the end of the product's life cycle, can be separated and disposed of with respect for the environment.



0456T
natural teakwood



0408S
Serpentine stone

TAY230

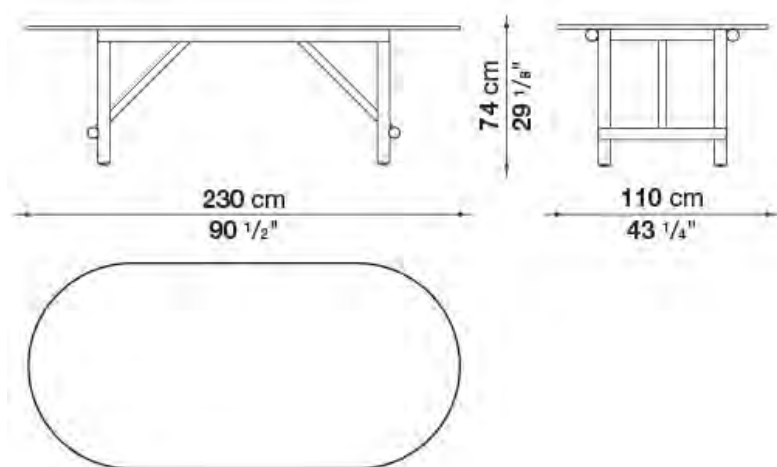


Table
(waterproof cover included)
"Limited Quantities"
\$7,931



PushPam

DESIGNED BY NAOTO FUKASAWA

Fiore is a collection of dining tables with small sizes and small tables that stand out for their perfect formal balance and for the striking texture of their cement finish, available in white cement finish through this program.



0159B
White Cement

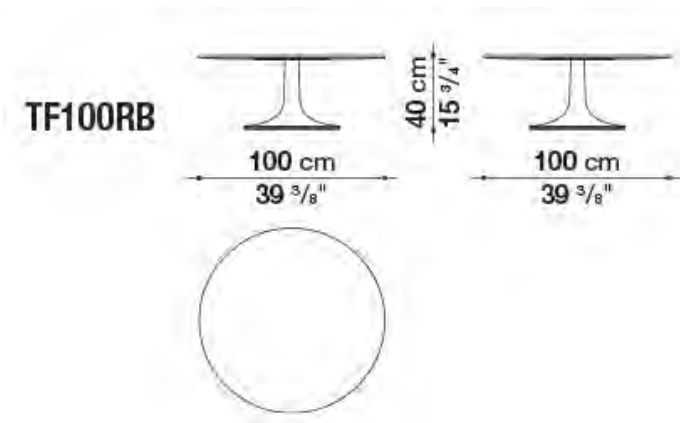
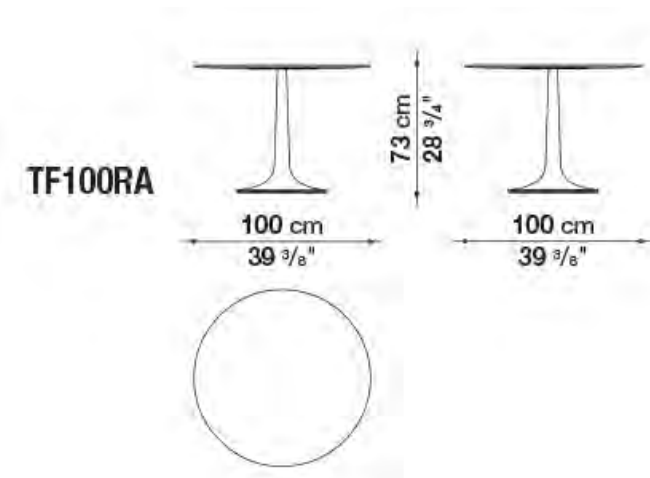


Table
Round dining - White cement \$2,967
Round low - White cement \$2,856



Ginepro

DESIGNED BY ANTONIO CITTERIO

The Ginepro table is made with an anthracite painted aluminum structure and a Serpentine stone top extremely durable and precious as the linear and timeless style.

With its two shapes (round and rectangular with rounded corners) and four dimensions, it lends itself to be placed in different outdoor environments: terraces, verandas, patios and gardens.

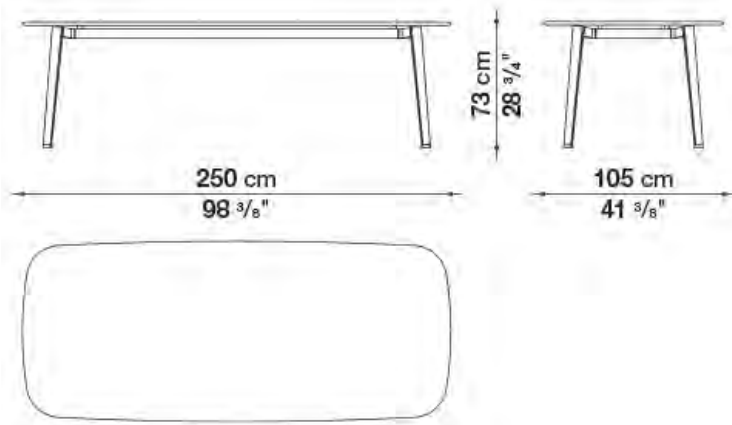


Top: 0408S
Serpentine stone

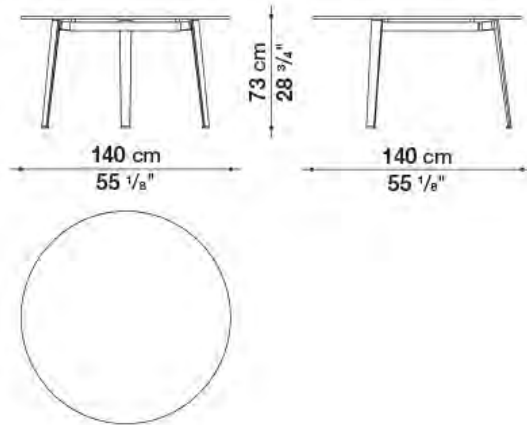


Frame: 0236B
anthracite painted

TGS250



TGS140R



Dining Table
(waterproof cover included)
Round TGS140R – \$5,499
Rectangular TGS250 – \$7,836



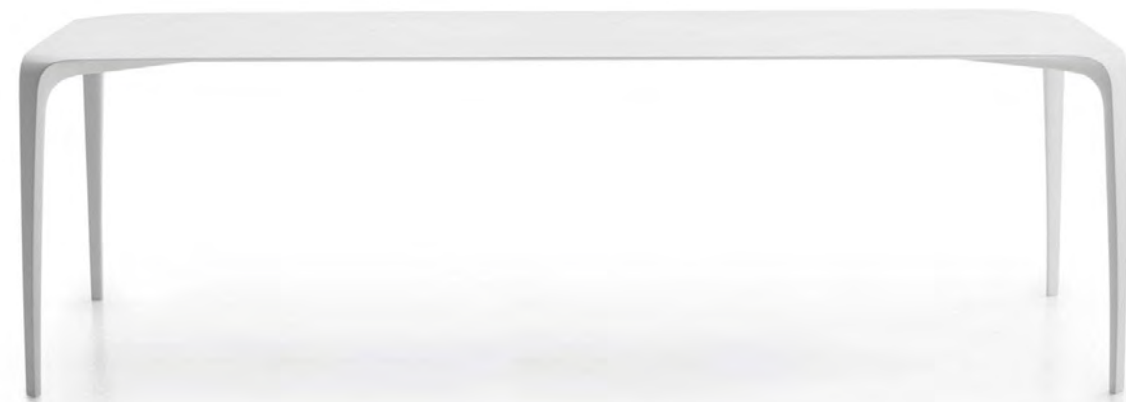
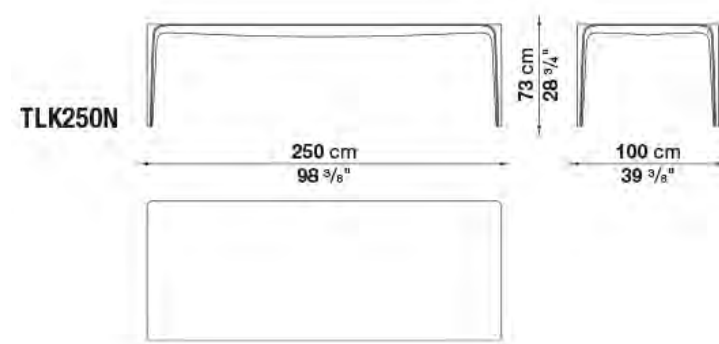
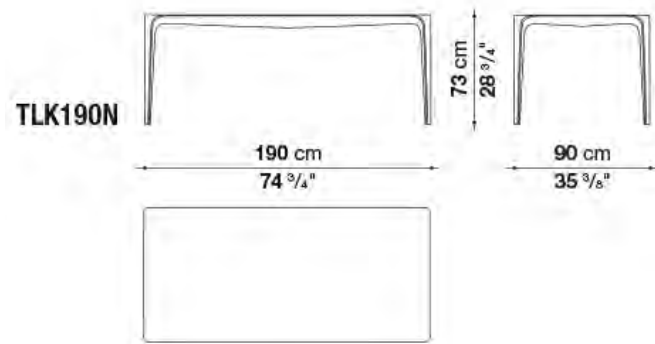
Link Outdoor

DESIGNED BY JAKOB WAGNER

A single piece, moulded, continuous, with no joints. The Link's distinguishing feature is its "soft" texture and the sensuality of its shape and material. Made of Cristalplant Outdoor®, the table is cast in a single mould and does not require connecting elements. The Link comes in a rectangular model which is produced only in a white colour.



0101G
White Cristalplant Outdoor®



Dining Table
(waterproof cover included)

TLK190N - \$10,381

TLK250N - \$13,787



Tobi-Ishi Outdoor

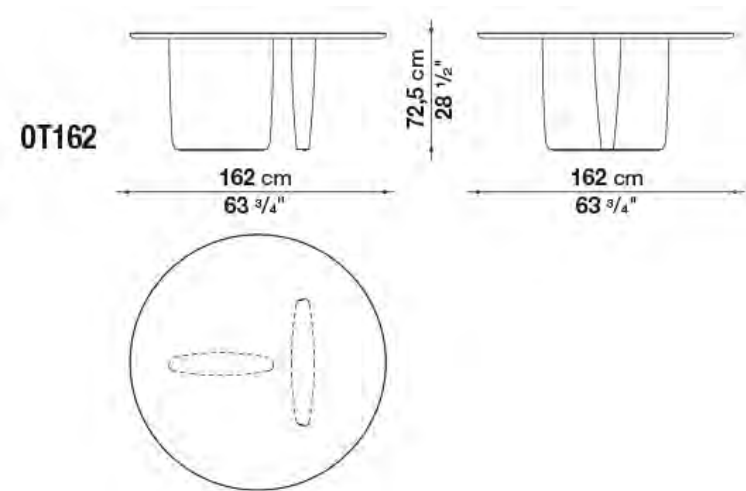
DESIGNED BY BARBER & OSGERBY

After the debut in the home collection, Edward Barber & Jay Osgerby design Tobi-Ishi Outdoor, the outdoor version of the iconic round dining table and of the small table clearly inspired by Zen.

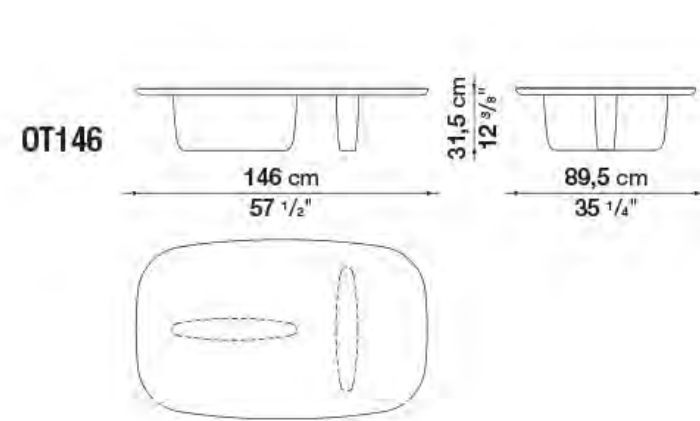
The overhang of the table and the vertical trapezoidal bases set at right angles generate an essential sculptural figure that appears to change shape depending on the point of observation. Exclusively made of cement, Tobi-Ishi Outdoor comes in two colour variants, grey and anthracite.



0237G
Grey cement



OT162



OT146



Table/ Small table

Dining OT162 - \$10,607
Small table OT146 - \$6,128



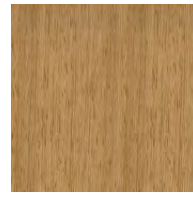
Mirto Outdoor Square

DESIGNED BY ANTONIO CITTERIO

The Mirto Outdoor tables are characterised by their purity of shape, timeless elegance and quality details. Available in numerous sizes, they come with light die-cast aluminium frames and a variety of tops: in painted aluminium, Iroko slats, porcelain stoneware, and glazed lava stone tiles decorated with reproductions of traditional Sicilian lace. This latest version uses a special material for the decoration, obtained by shattering the glass of monitors and discarded electronic instruments, and applying it to the surface of the tiles through an exclusive manufacturing process. Mirto Outdoor is a complete series of outdoor furniture inclusive of chairs, small armchairs, loungers, small tables, consoles and other furnishings.



Top & Frame:
0186V
White Painted

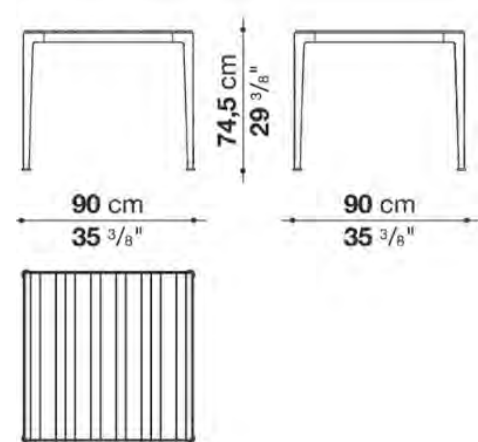


Top:
0405I
Brushed Natural Iroko

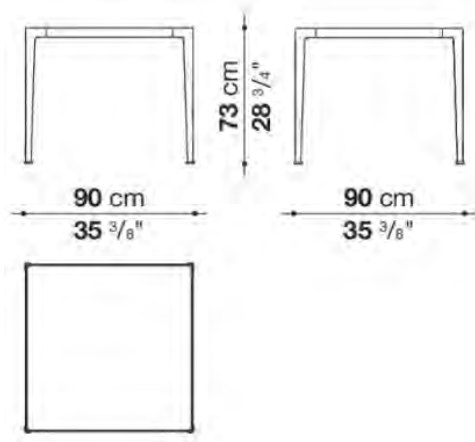


Frame & Top:
0380T
Tortora Painted

MI90TL



MI90T



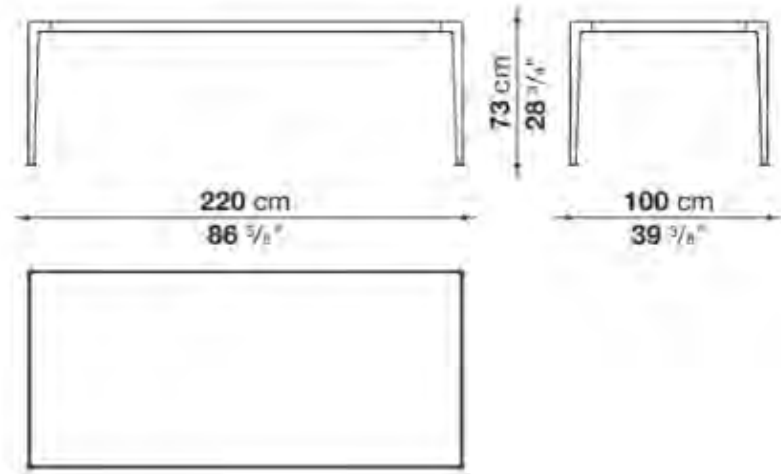
Small table
MI90T - \$2,885
MI90TL - \$5,217



Mirto Outdoor

DESIGNED BY ANTONIO CITTERIO

MI220T



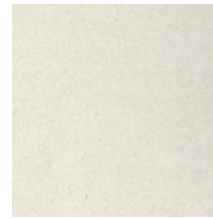
Dining table
MI220T - \$4,919



Pablo

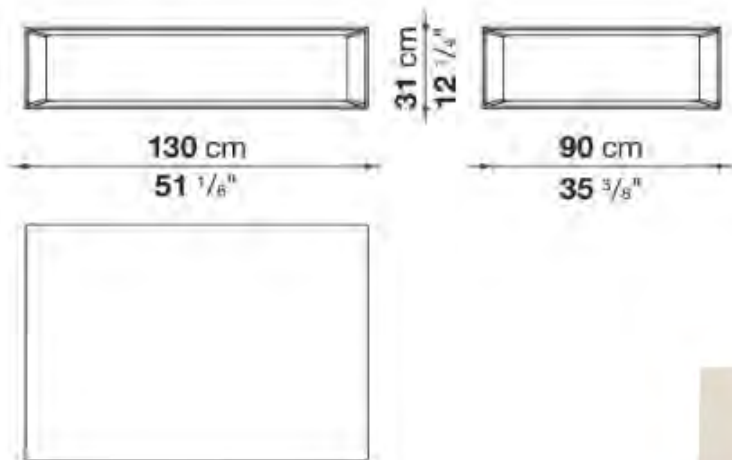
DESIGNED BY VINCENT VAN DUYSSEN

The decisive yet soft lines of Pablo Outdoor seats are perfectly balanced in the small cement outdoor tables. Linear, solid, and highly geometric shapes represent the heart of these architectural objects with a certain effect. To provide multiple solutions, the small Pablo Outdoor tables come in two sizes and two colours. The colours give shape to a large, low model that works perfectly as an island defining a conversation area, and a higher, narrower model with a square base, is ideal as a service element next to the sofa or armchair.



0270B
Antique White Cement

TPB130



Low Table
TPB130 - \$3,992



Awa Outdoor

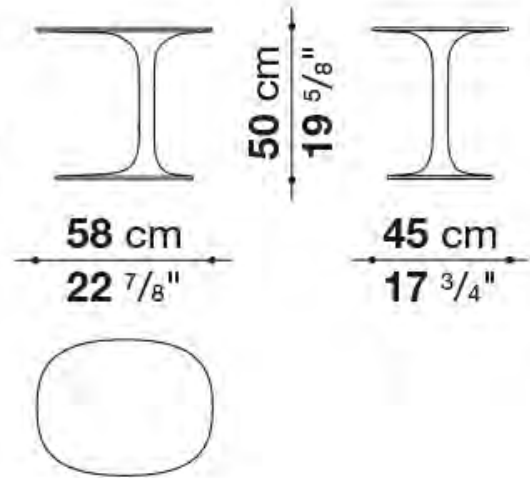
DESIGNED BY NAOTO FUKASAWA

The Awa is an elegantly asymmetrical table given outdoor functionality by a new type of Cristalplant Outdoor® material.



0101G
White Cristalplant Outdoor®

TA1



Small table
\$1,813



Colosseo Outdoor

DESIGNED BY NAOTO FUKASAWA

In 2020 Colosseo debuts outdoor in the new porcelain stoneware version in sage and clay colors. A furnishing element with various functions depending on the occasion and need (coffee table and pouf). Colosseo takes its name from the designer's inspiration. Naoto Fukasawa has in fact arrived at the desired shape thinking of a solid in the shape of an upside-down truncated cone, creating an assonance with the structure of the famous Roman arena.

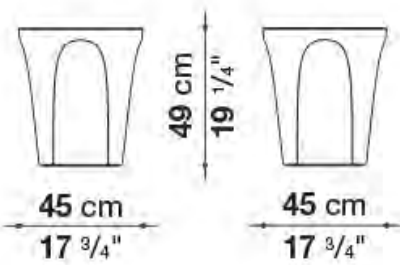


0302A
Clay Stoneware



0416S
Sage Stoneware

OCL45T



Small table

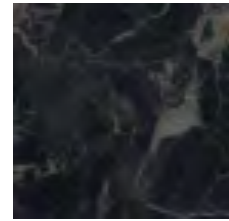
"Limited quantities"
sage stoneware - \$1,118
clay stoneware - \$1,118



Fat-fat Outdoor

DESIGNED BY PATRICIA URQUIOLA

The concept of a tray helped create three small outdoor tables with steel frames that give them a lightweight look. These small tables are entirely painted in the finishes anthracite, tortora, sage and clay or with tops in porcelain stoneware.

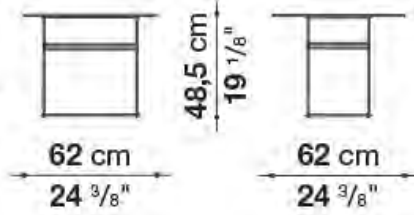


Top: 0355N
anthracite stone
porcelain stoneware

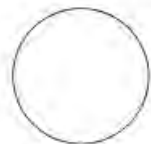
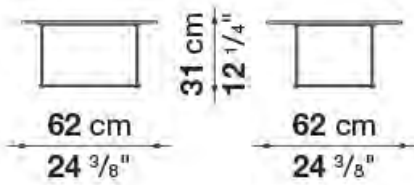


Frame: 0236B
anthracite painted

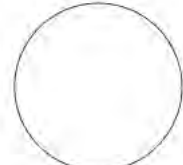
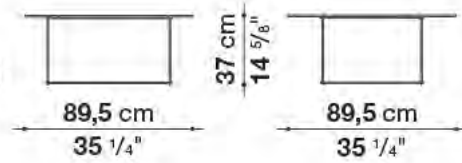
OTF62AG



OTF62G



OTF92G



Small table

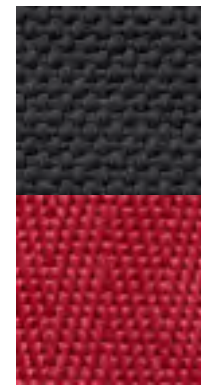
- OTF62G - \$1,761
- OTF62AG - \$2,200
- OTF92G - \$2,375



Frank Outdoor

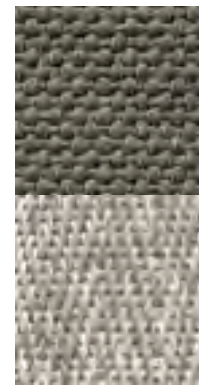
DESIGNED BY ANTONIO CITTERIO

This outdoor ottomans have contrasting profiles matched to colourful outdoor fabrics to provide a touch of colour to your outdoor furnishings.



Lesia 255

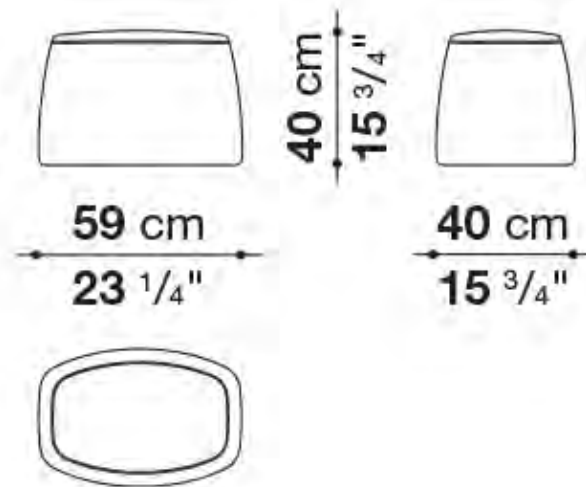
Profile:
0075R red



Lesia 280

Profile:
0082N natural

OF58P



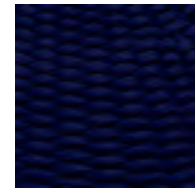
Pouf
(waterproof cover included)
"Limited quantities"
Red profile, Lesia 255 - \$1,693
Natural profile, Lesia 280 - \$1,693



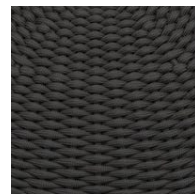
Hospes

DESIGNED BY B&B ITALIA CR&S - 2020

The B&B Italia's Research & Development Centre has developed Hospes, an extremely versatile ottoman that is at its best in any room. A dynamic complement that can be used in different ways and fits perfectly with different product families. Made in two sizes and three colors - overseas blue, stone, anthracite - it is based on a robust aluminum frame covered with an interlacing of waterproof ropes. On top, the interlacing is held up by webbing that provides support and comfort.

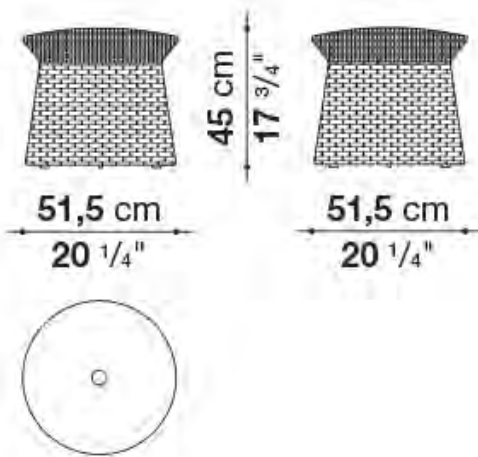


0835B
Overseas Blue
polypropylene

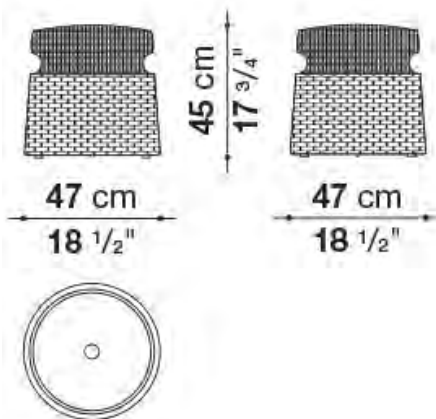


0133A
Anthracite
polypropylene

HE1



HE2



Pouf
"Limited quantities"
HE1 - \$1,626
HE2 - \$1,626



Springtime

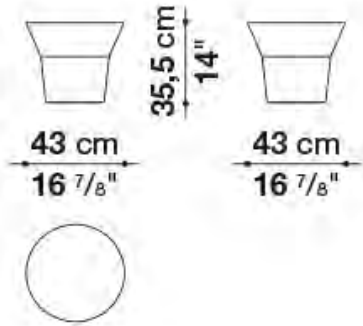
DESIGNED BY JEAN-MARIE MASSAUD

These decorative side tables, designed by Jean-Marie Massaud, are made in white Cristalplant Outdoor®.

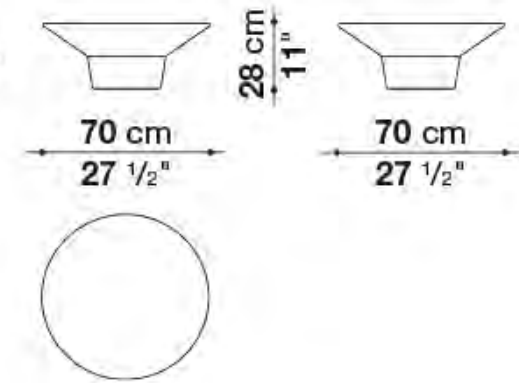


0101G
White Cristalplant Outdoor®

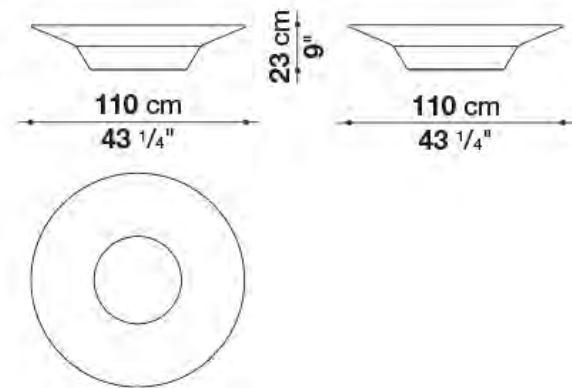
TST4



TST7



TST11



Service elements

- TST7 - \$1,984
- TST4 - \$1,629
- TST11 - \$4,468



Karam

DESIGNED BY B&B ITALIA CR&S 2019

Karam baskets and bowls, created in various sizes to form a table trio and a floor trio, are made in polyolefin cord in four variants that each combine two shades of colour.

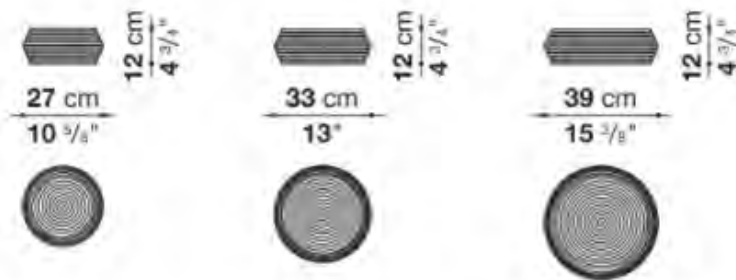


0719B
Violet/Red

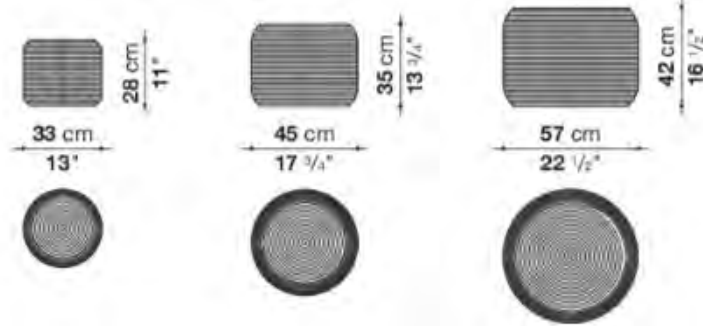


0288T
Anthracite/Stone

KA01



KA02



Baskets

KA01 - \$521
KA02 - \$982



Tramae

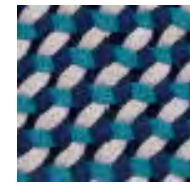
DESIGNED BY unPIZZO

unPIZZO, a design studio and textile handicrafts laboratory specialized in interlacing for furnishing, continues its research on the revival of ancient craft techniques with Tramae, a brand new ottoman for B&B Italia.

Available in three dimensions, this small object full of character stands out for its hexagonal shape, which is rounded until the edges are no longer visible.

The surface shows a singular dynamic mix of materials and colors that come to life through an exclusive weave that reinterprets the tradition of wicker basket making in a contemporary key.

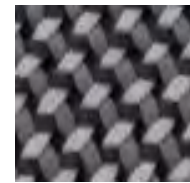
At the end of its lifespan, Tramae can be dismantled completely so that each component can be separated and disposed of in the best way for each material.



0843B
night blue
polypropylene

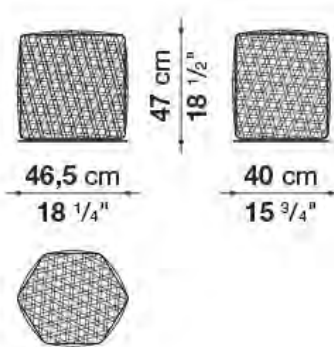


0417V
Green
polypropylene

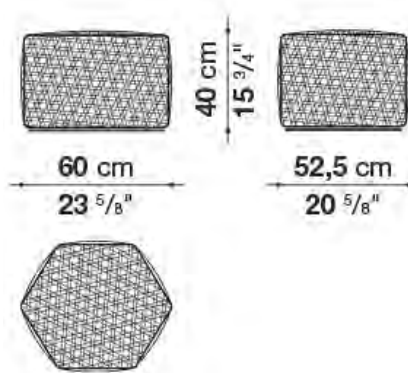


0296G
dark grey
polypropylene

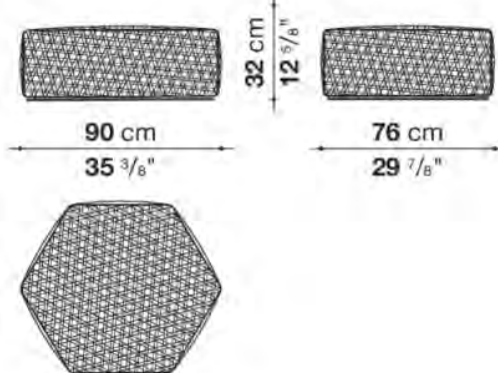
TRM47P



TRM60P

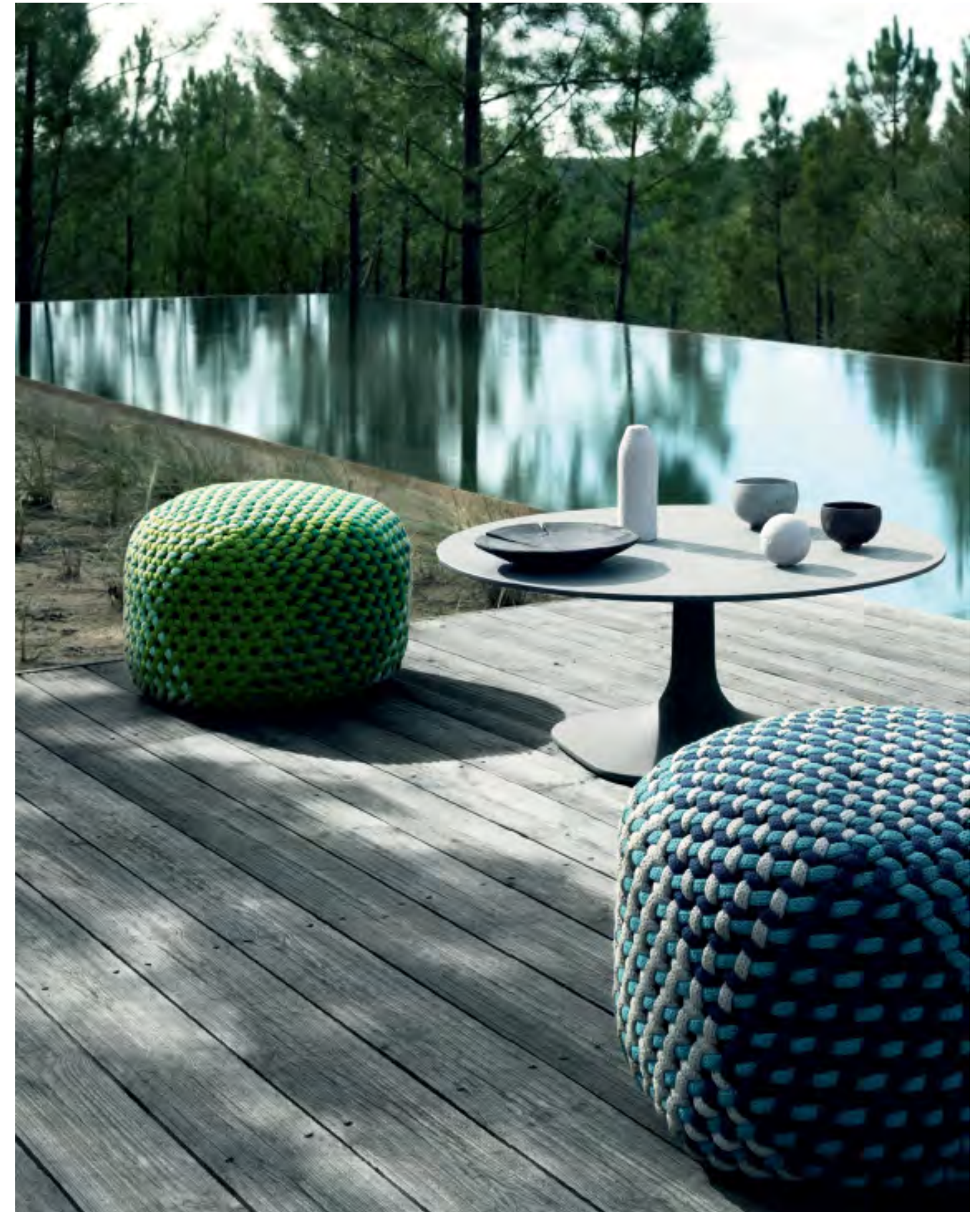


TRM90P



Ottomans
(waterproof cover included)

TRM47P - \$1,843
TRM60P - \$2,376
TRM90P - \$3,110



Outdoor covers and upholstery

FOUTDOOR FABRIC

The threads in B&B Italia Outdoor fabrics offer excellent colour resistance to UV rays, brine, chlorine, acids, suntan creams, sweat, stains and wear.

The stabilisers added for outdoor use and the additives used for dyeing the thread prevent the formation of bacteria, mold and fungus.

The stitching on the covers is designed with a special thread with a water-repellent finish, that blocks the absorption of water and penetration through to the fabric. Carefully tensioned stitching prevents the passage of water through the needle hole.

The water resistance of the fabrics, differs according to their fiber composition and their treatment.

To launder the Outdoor covers at home, please follow the instructions represented by the care symbols attached to the product.

OUTDOOR UPHOLSTERIES

Polyester covers: to better protect the upholstery (seat cushions, headrests and backs), all cushions are fitted with a polyester cover whose water repellent treatment offer greater protections and an additional barrier against the penetration of liquids. The covers on Butterfly and Fat-Sofa Outdoor upholstery also offer the additional protection of a heat-sealed ribbon under the stitching, which makes the linings completely waterproof.

Upholsteries: The seat cushions are made of contoured polyurethane, and the backrest cushions are in polyester fiber. To fight the formation of folds and/or wrinkles caused by use, we recommend simply hanging the cover out and beating it manually to remove dust and air from the fibres. If the upholstery accidentally gets wet because of a strong, unexpected shower, we recommend removing the cover and allowing the product to air/sun dry. Husk Outdoor upholstery: regularly detach the cushion from the frame and fluff it up on all sides.

To launder the upholstery at home, follow the care symbols attached to the product. Hang it in the open air to dry. When the product is not being used (for example, in the winter), we recommend you remove the seat and back cushions and place them in a dry, ventilated area.

Descriptions and pictures of products included in this catalogue have an indicative value only and are not binding for products' use. B&B Italia reserves the right to modify their products without prior notification.

For further technical information of the products, please contact the authorised dealer closest to you (see www.bebitalia.com).

Where to buy

B&B ITALIA STORES

B&B ITALIA SpA
22060 Novedrate (CO) Italy Strada Provinciale 32
T +39 031 795 111
F. +39 031 791 592
www.bebitalia.it - www.maxalto.it

B&B ITALIA NEW YORK (58TH)
150 East 58th Street Main Floor
New York, NY 10155, USA
T 212 758 4046
T 1-800 872 1697 (toll free)
F. 212 758 9155
info.usa@bebitalia.com
www.bebitalia.com

B&B ITALIA NEW YORK (MADISON AVE)
135 Madison Avenue
New York, NY 10016, USA
T 212 758 4046
info.usa@bebitalia.com
www.bebitalia.com

B&B ITALIA WASHINGTON DC
3320 M. Street NW Washington
D.C. 20007, USA
T 202 337 7700
F. 202 337 7900
info.usa@bebitalia.com
www.bebitalia.com

B&B ITALIA LOS ANGELES
313 N Robertson Blvd
Los Angeles, CA 90048
T 310 278 3191
info@divafurniture.com
www.divafurniture.com

MAXALTO LA
313 N Robertson Blvd
Los Angeles, CA 90048
T 310 986 6448
info@divafurniture.com
www.divafurniture.com

B&B ITALIA CHICAGO
314 West Superior Street
Chicago, IL 60654
T 312 335 3855
info@wpachicago.com
www.wpachicago.com

B&B ITALIA MIAMI
4141 NE 2nd Avenue
Miami, FL 33134
T 786.310.7255
info.usa@bebitalia.com
www.bebitalia.com

B&B ITALIA DALLAS
1707 Oak Lawn Avenue
Dallas, TX 75207
T 214.389.9513
info.usa@bebitalia.com
www.bebitalia.com

B&B ITALIA SAN FRANCISCO
2211 Alameda Street
San Francisco, CA 94103
T 415 565 0900
sales@arksf.com
www.arksf.com

B&B ITALIA SEATTLE
1300 Western Avenue
Seattle, WA 98101
T 206 287 9992
seattle@divafurniture.com
www.divafurnitureseattle.com

B&B ITALIA SUN VALLEY 110
Lindsay Circle Ketchum, ID
83340
T 208 928 6379
rob@arsunvalley.com
www.arsunvalley.com

DEALERS USA

ARKITEKTURA IN STU
2131 Cole Street
Birmingham, MI 48009
T 248 646 0097
sales@arksf.com
www.arksf.com

ARKITEKTURA IN SITU
Maxalto Shop-in-Shop
560 9th Street
San Francisco, CA 94103
T 415 565 7200
sales@arksf.com
www.arksf.com

B&B ITALIA MIAMI
2331 Ponce De Leon Blvd
Coral Gables, FL 33134
T 305 448 7367
info@luminaire.com
www.luminaire.com

BE-DESIGN
2016 W. Alabama Street
Houston, TX 77098
T 713 623 1177
info@be-design.us
www.be-design.us

CENTRO
4727 McPherson Avenue
St Louis, MO 63108
T 314 454 0111
info@centro-inc.com
www.centro-inc.com

CONTEXT
349 Peachtree Hills Ave, Suite B2
Atlanta, GA 30305
T 477 3301
info@contextgallery.com
www.contextgallery.com

CORE ID
3700 Old Cantrell Road #103
Little Rock, AR 72202
T 501 944 2535
www.coreidhome.com
info@coreidhome.com

HIVE
820 NW Glisan Street
Portland, OR 97209
T 503 242 1967
info@hivemodern.com
www.hivemodern.com

INSPIRATION
1250 Kapiolani Blvd
Honolulu, HI 96814
T 808 956 1250
servicehi@inspirationinteriors.com
www.inspirationinteriors.com

JANGEORGE
17 Madison Street #1619
Sag Harbor, NY 11963
T 631 899 4848
sagharbor@jangeorge.com
www.jangeorge.com

LIGHT SPOT
2927 South Highland Drive
Salt Lake City, UT 84106
T 801 355 1553
info@lightspotmodernndesign.com
www.lightspotmodernndesign.com

LIVING PENTHOUSE
900 S. Las Vegas Blvd. - PH 1501
Las Vegas, NV 8910
T 702 750 9404
roberto@eliteidsa.com
www.livingpenthouse.com

MUSEO
3021 Main Street
Kansas City, MO 64108
T 816 531 3537
info@museousa.com
www.museousa.com

LUMATURE
B&B Italia & Maxalto Shop-in-Shop
15620 N Scottsdale Road
Scottsdale, AZ 85254
T 480 998 5505
sales@lumature.com
www.lumature.com

MONTAGE
B&B Italia & Maxalto Shop-in-Shop
75 Arlington Street
Boston, MA 02216
T 617 451 9400
info@montageweb.com
www.montageweb.com

OLC
152 N. 3rd Street
Philadelphia, PA 19106
T 215 923 6085
info@olc152.com
www.olc152.com

PROJECTS
501 East Locust Street
Des Moines, IA 50309
T 515 557 1833
sales@projectsfurniture.com
www.projectsfurniture.com

ROAM
2914 Hennepin Avenue
Minneapolis, MN 55408
T 612 377 6465
info@roaminteriors.com
www.roaminteriors.com

SOFT SQUARE
1507 Fruitville Rd.
Sarasota, FL 34234
T 941 554 4068
www.softsquare.com

SR HUGHES
3410 S. Peoria Avenue, Suite 100
Tulsa, OK 4105
T 918 742 5515
showroom@srhughes.com
www.srhughes.com

STUDIO COMO
2535 Walnut Street
Denver, CO 80205
T 303 296 1495
info@studiocomo.com
www.studiocomo.com

STUDIO COMO
90 E. Simpson Avenue, Suite 110
Jackson Hole, WY 83001
T 307 735 0020
info@studiocomo.com
www.studiocomo.com

STUDIO COMO
109 E. Oak Street, Suite 1 C.
Bozeman, MT 59715
T 406 219 0010
info@studiocomo.com
www.studiocomo.com

STYLUS
1416 Av. Manuel Fernandez Juncosw
San Juan, 00909, Puerto Rico
T 787 293 0457

SURROUNDINGS HOME DÉCOR 850
West St Claire Avenue Cleveland, OH
44113
T 216 623 4070
info@shdecor.com
www.surroundingshomedecor.com

URBANSPACE INTERIORS

301 West Avenue, #100
Austin, TX 78701
T 512 476 0014
www.urbanspaceinteriors.com
shop@urbanspaceinteriors.com

VOLTAGE

B&B Italia & Maxalto Shop-in-Shop
3209 Madison Road
Cincinnati, OH 45209
T 513 871 5483
info@voltagefurniture.com
www.voltagefurniture.com

WALTERS WICKER, INC

979 Third Avenue, Suite 538 New
York, NY 10022
T (212) 758-0472
info@waltersnyc.com
www.waltersnyc.com

WEISSHOUSE

324 S. Highland Ave
Pittsburgh, PA 15206
T 412 441 8888
info@weisshouse.com
www.weisshouse.com

DEALERS CANADA

INFORM INTERIORS

B&B Italia & Maxalto Shop-in-Shop
97 Water Street
Vancouver, BC V6B 1A 1
T 604 682 3868
info@informinteriors.com
www.informinteriors.com

KIOSK

B&B Italia & Maxalto Shop-in-Shop '
288 King Street East
Toronto, ON M5A 1 K4
T 416 539 9665
contact@kioskdesign.ca
www.kioskdesign.ca

LE BELLE ARTI

16844 111 Avenue NW
Edmonton, AB T5M 4C9
T 780 454 0677
info@lebellearti.com
www.lebellearti.com

LE BELLE ARTI

B&B Italia & Maxalto Shop-in-Shop
1435 9 Avenue SE
Calgary, AB T2G OT 4
T 403 234 9700
calgary@lebellearti.com
www.lebellearti.com

MOBILIER AVANT-SCENE

620 Rue St-Paul
Montreal, QUE H3C 1 L9
T 514 281 6782
contact@avant-scene.com
www.avant-scene.com