

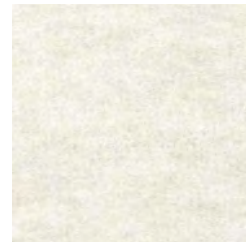
Camaleonda

DESIGNED BY MARIO BELLINI

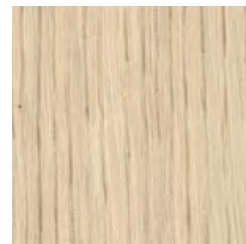
In its reissue, Camaleonda preserves the elements that have made it a contemporary classic. By mutual agreement, Mario Bellini and B&B Italia have decided to keep the cm 90x90 seat module, together with the backrest and the armrest, faithful to the original project, whose original cutting pattern was used for the new edition. The generous polyurethane padding that forms the characteristic capitonné design remains unchanged, still manufactured with the innovative system of cables, hooks and rings created by Bellini in 1970, which defines the characteristic look and modularity. Thanks to the tie-rods and the rings, in fact, the modules can be unhooked and recombined at will, allowing the sofa to adapt to an evolving taste and the dynamic needs of those using it. The fundamental characteristic of Camaleonda is its unlimited modularity, a geometric pattern that allows each element to become a sort of enormous pixel through which to define your home environment. By hooking and unhooking seats, backrests and armrests, you can enjoy the luxury of changing your mind as many times as you desire, moving and redesigning the space. A concept which is dear to Mario Bellini: "Of all the objects I have designed, Camaleonda is perhaps the best in terms of its sense of freedom. There are infinite number of possible configurations." The padding has been thoroughly updated by the B&B Italia's Research & Development Centre, making it even more comfortable than the original version. Thus the magical balance between the rigorous geometry of the square and the welcoming roundness of the padding is confirmed, further underlining the elasticity and tactile ergonomics that characterize many of Mario Bellini's design projects. Camaleonda can be covered with B&B Italia's entire textile and leather collection, allowing for another variable in the multitude of possible combinations. Camaleonda is a dynamic, alive and sincere object, not at all enigmatic, that allows for an infinite number of configurations while still maintaining its peculiar and unique identity.



Enia 400



Licata 102

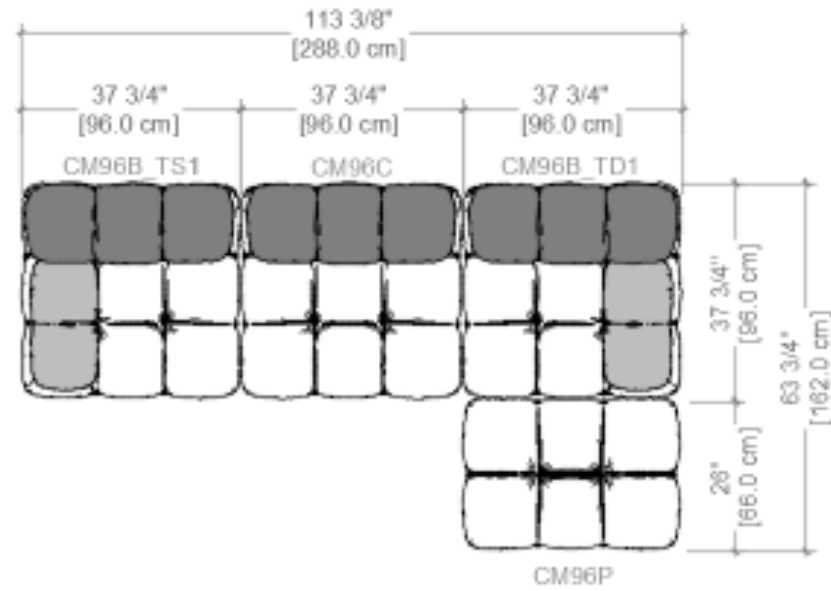


Feet: Natural Beech

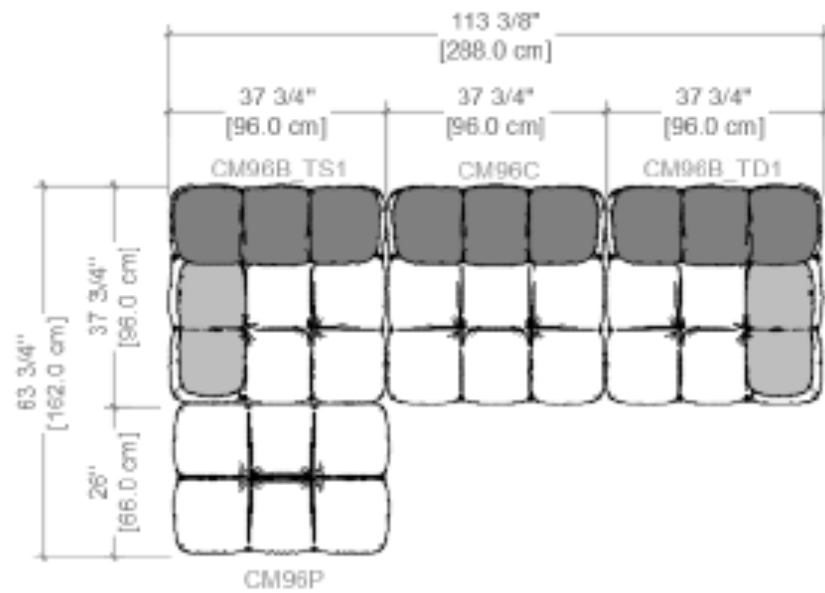


Camaleonda

DESIGNED BY MARIO BELLINI



Layout 1



Layout 2



Sectional sofa

Enia 400 (green), Feet: Natural beech - \$19,581



Sectional sofa

Licata 102 (natural), Feet: Natural beech - \$21,284

Bend

DESIGNED BY PATRICIA URQUIOLA

It seems shaped by an artist but actually derives from a study of 3D models and digital research. It seems a monolith that has been shaped by subtraction, rounded and moulded by the designer.

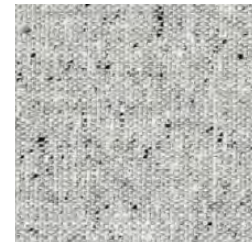
The irregular shape enhances comfort, the contrasting seams define the design and movement. Bend-Sofa combines manual skills and technology, solidity and strength, along with considerable flexibility in terms of use ensured by the extensive range of models.

Comes with:

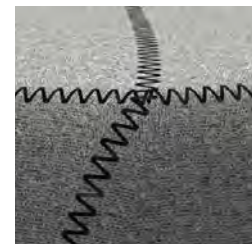
BSB (x1) - Bend Armrest Support

B40C (x1) - Bend Cushion 24" x 15 3/4"

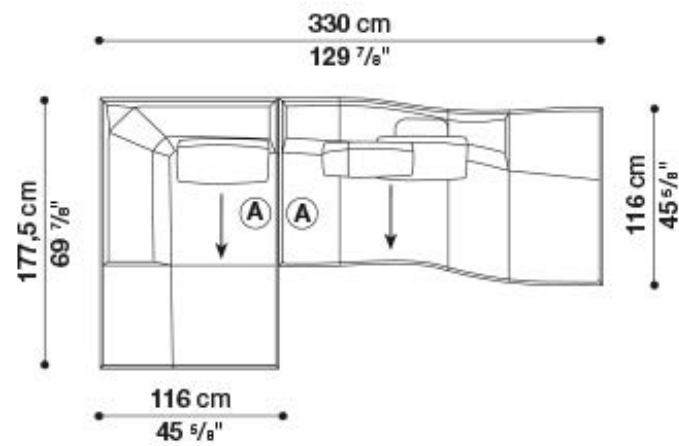
B55C (x1) - Bend Cushion 24" x 21 1/4"



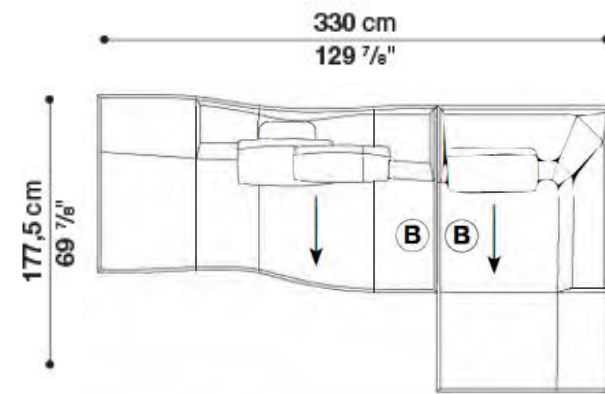
Edit 253



Zigzac Stitching/
Black 1014



Layout 1: B177LS + B214CS Edit 253,
Black stitching: \$13,166



Layout 2: B177LD + B214CD
Edit 253, Black stitching: \$13,166



Bend

DESIGNED BY PATRICIA URQUIOLA



Secional Sofa

Edit 253, Blue stitching
\$12,540



Charles

DESIGNED BY ANTONIO CITTERIO

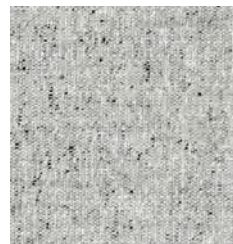
The centerpiece of modern lifestyle, the Charles has become a hallmark in the world of design. The light feeling especially conveyed by the essential design of the "inverted L"- shaped feet, along with a single seat-cushion and a series of free cushions placed on the backrest is the distinctive feature of a sofa that has met with boundless success.

The airy shape and simple profile make it, almost by contrast, extremely rich and innovative from a spatial standpoint, a system that encourages the creation of ever

Comes with:

CH72/C (x2) - Charles back cushions 28"x19"

CH48/C (x1) - Charles back cushions 19"x19"



Edit 253

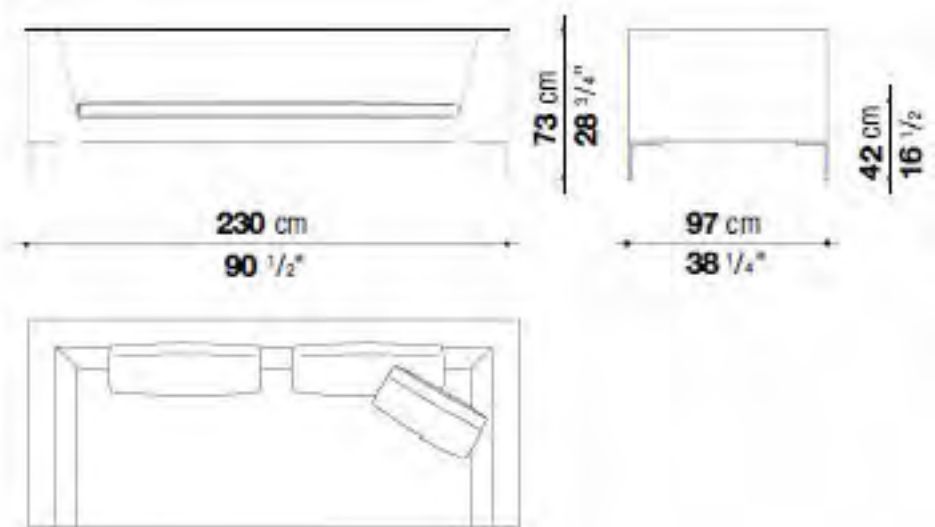


Emily 150



Feet: Bright brushed 0189A

CH228



Charles

DESIGNED BY ANTONIO CITTERIO



Edit 253, bright brushed feet
\$9,322



Emily 150, bright brushed feet
Come with 2 extra optional cushions: Lesina 150, Samara 270
\$10,319

Charles

DESIGNED BY ANTONIO CITTERIO

The centerpiece of modern lifestyle, the Charles has become a hallmark in the world of design. The light feeling especially conveyed by the essential design of the "inverted L"- shaped feet, along with a single seat-cushion and a series of free cushions placed on the backrest is the distinctive feature of a sofa that has met with boundless success.

The airy shape and simple profile make it, almost by contrast, extremely rich and innovative from a spatial standpoint, a system that encourages the creation of ever new compositions.

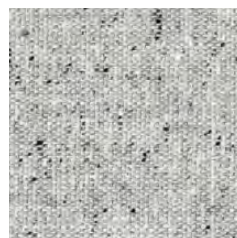
Comes with:

CH72/C (x3) - Charles back cushions 28"x19"

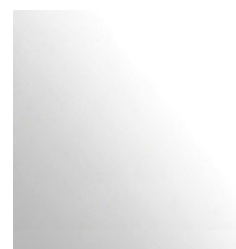
CH48/C (x3) - Charles back cushions 19"x19"



Emily 150

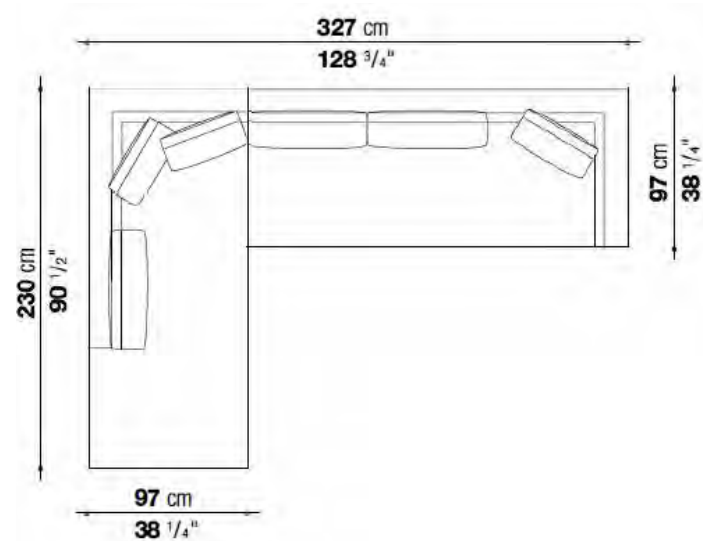


Edit 253

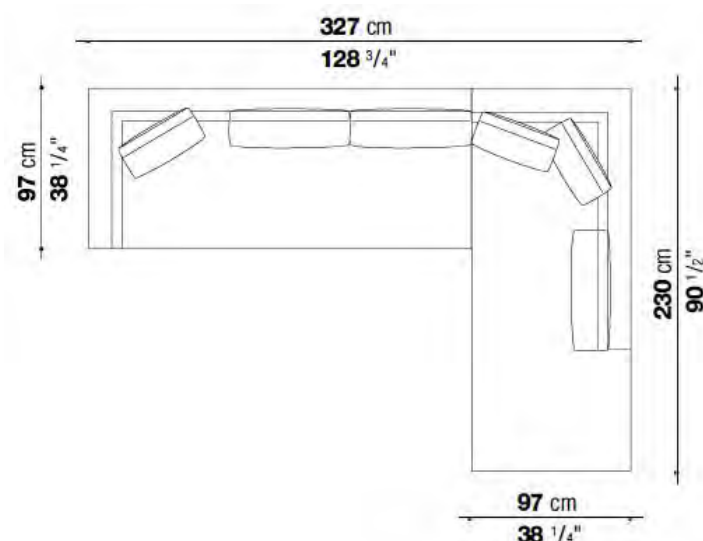


Feet: Bright brushed 0189A

Layout 1: CH228D + CH228LS



Layout 2: CH228S + CH228LD



Charles

DESIGNED BY ANTONIO CITTERIO



Sectional sofa

Emily 150, bright brushed feet

Come with 2 extra optional cushions: Lesina 150, Samara 270

\$19,324



Sectional sofa

Edit 253, bright brushed feet

\$18,327

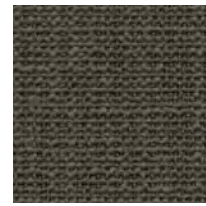
Ray

DESIGNED BY ANTONIO CITTERIO

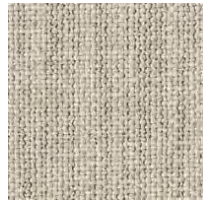
A successful design strategy that achieves a balance of functional and aesthetic features, and entrusts the details to the right role: the seating system Ray is designed for a long life. Modular, with two depths, with an extensive compositional range that includes linear and corner elements and chaise longue, it stands out for the tailoring detail of the blanket stitch that runs along the profiles of the cover, both self-coloured and in contrasting hues.

Comes with:

- RY72C (x4) - Ray back cushions 28"x19"
- RY48C (x3) - Ray back cushions 19"x19"



Esopo 153



Astro 207

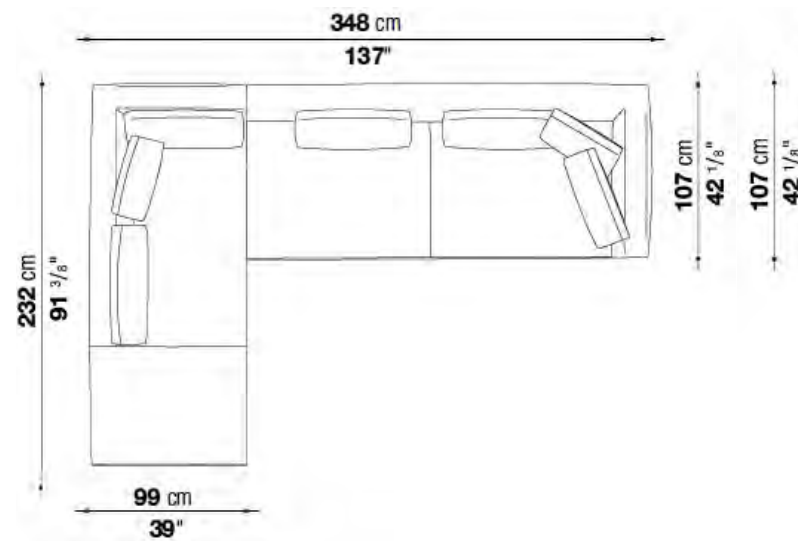


Feet: Painted Black chromed

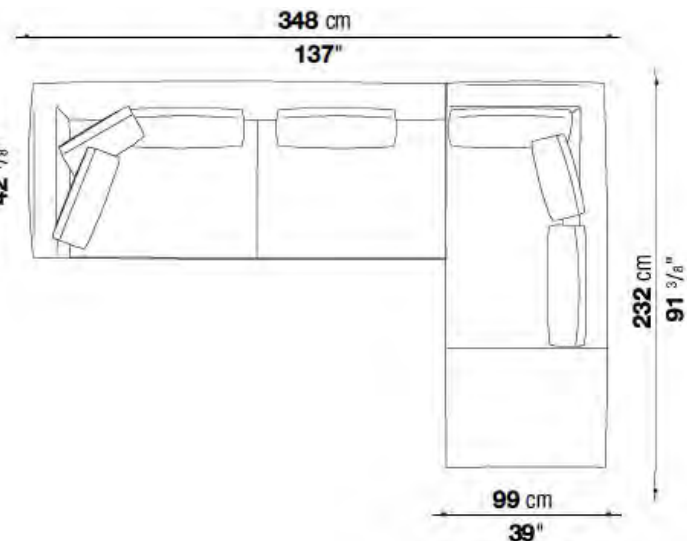


Stitching: Pearl grey 1011

Layout 1: RY232LSN + RYL249DN



Layout 2: RY232LDN + RYL249SN



Sectional sofa

- Esopo 153 - \$21,656
- Astro 207 - \$20,586

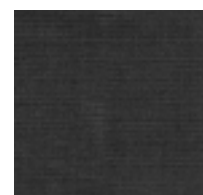
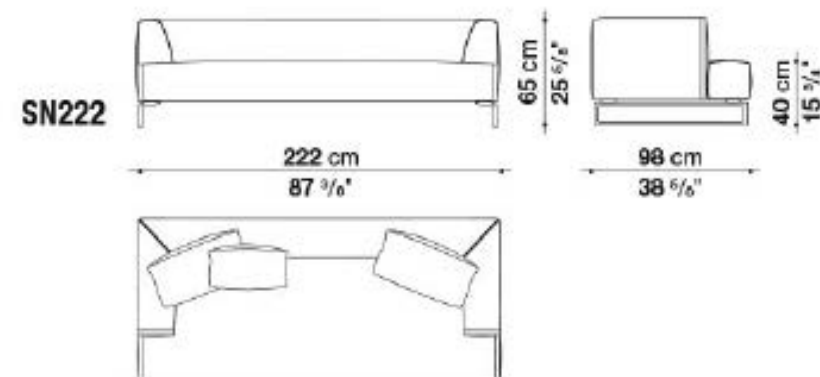
Solo '14

DESIGNED BY ANTONIO CITTERIO

The beautifully balanced construction of solo'14 was obtained through the reduction of all superfluous elements and the careful proportion of its components. The die-cast aluminum structure supports a deep seat, with a joint back which also acts as armrest, on which cushions sit freely. The raw edge faux leather profile highlights the silhouette of the arm rest and seat, giving it a unique sartorial finish. It is available in four shades: natural, dark brown, black and taupe, all of which can be paired with different color edges, thus creating contrasting or harmonious effects. The die-cast process is shown through the specific design of the support pieces, available in different finishes.

Comes with:

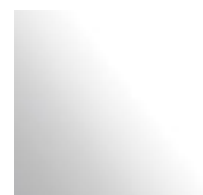
SN48C (x2) - Back cushions



Ellade 251



Profile: Tortora color



Feet: Bright brushed 0189A

Straight sofa
"Limited Quantities"
Ellade 251, Tortora profile,
Bright brushed feet - \$8,352



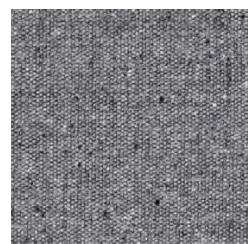
Tufty-time

DESIGNED BY PATRICIA URQUIOLA

Tufty-Time, a free and casual lifestyle. It was 2015 and Patricia Urquiola said "I wanted to take a new look at capitone and Chesterfield styles, with a special reinterpretations of 1960s and 1970s, wich I love".

Comes with:

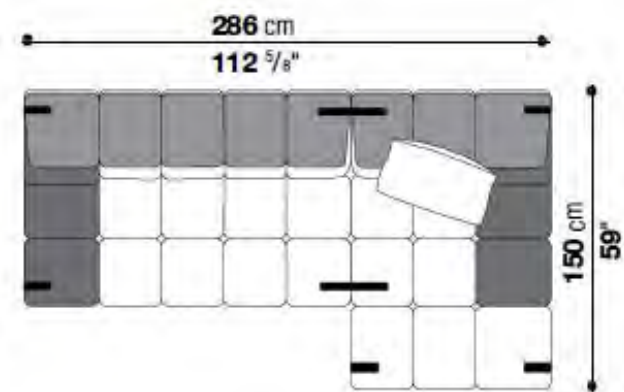
T60C (x1) - Throw cushion 23 5/8"x23 5/8"



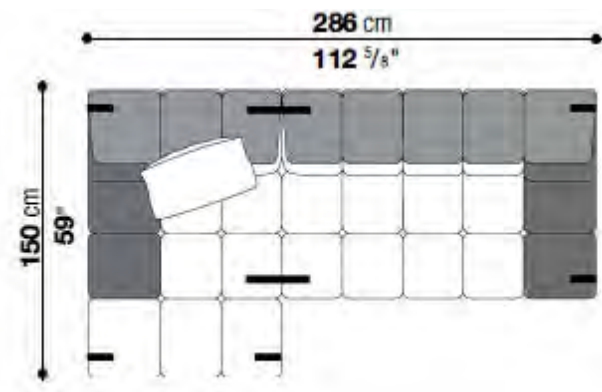
Edit 251



Feet: Black color



Layout 1
T177BS_3 + T109BD_4



Layout 2
T177BD_3 + T109BS_4



Sectional sofa
Edit 251 - \$12,969



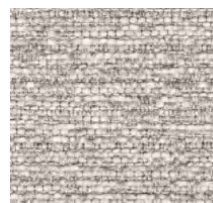
Otium Soft

DESIGNED BY ANTONIO CITTERIO

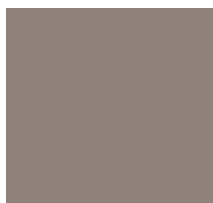
Otium is a new seating system that stands out for its contemporary classic style, generous proportions and great comfort. Available in various sizes and two seat depths, this modular line offers multiple linear and angular compositions, also with terminal elements with ottomans. Highly distinctive details are the tapered armrests and the faux leather trimmings that outline and embellish the armrests and the seat and backrest cushions. The base is defined by a metal profile in black chrome or bronze nickel.

Comes with:

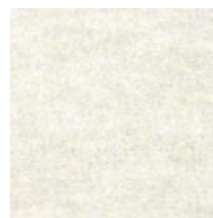
- 90x60cm back cushions (x2)
- 60x60cm back cushions (x2)
- 48x48cm optional cushions- box style (x2)



Sofa & 90x60cm back & optional cushion: Sirtaki 200



Profile: Tortora color

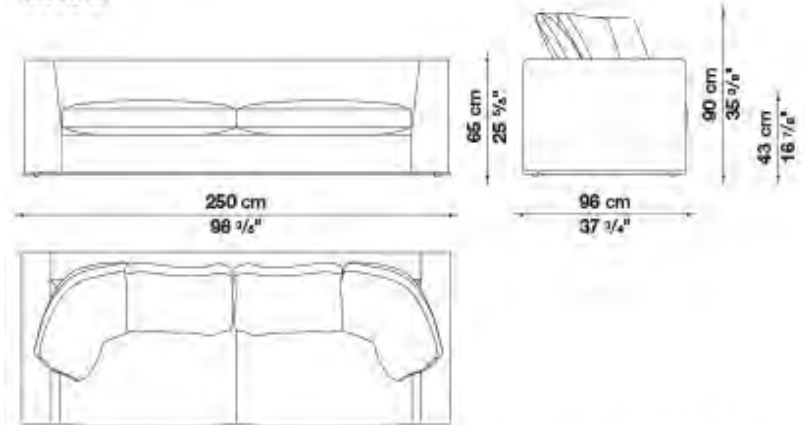


60x60cm back cushions: Licata 102



Frame: Graphite painted

9NU250



Straight sofa
\$15,555



MAXALTO

Dives

DESIGNED BY ANTONIO CITTERIO

Dives Soft is a family of linear and modular sofas available in various sizes and in two seat depths. The version with a narrower seat depth is distinguished by its armrests and backrest, which feature two different upholstery styles: smooth on the exterior and quilted in classic Chesterfield style on the interior. A sophisticated and refined detail to be enjoyed. In the version with a wider seat, the upholstery is entirely smooth, with soft down feather cushions making for an even more welcoming and relaxed looking sofa. Both versions share the same, soft and generous padding, for optimal comfort. The upholstery comes in a wide range of fabrics and leathers with special couture details: decorative, matching or contrasting blanket stitching for the fabric versions, and elegant “envelope stitching” for the leather ones. The feet are either covered in fabric or leather or available in a shellac finish.



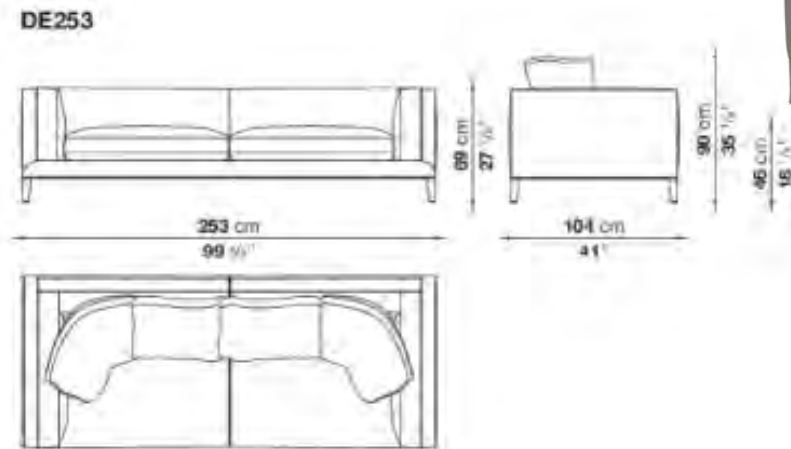
Sofa & Back Cushions:
Solaris 280



48x48cm Optional cushions: Leon 215

Comes with:

- 90x60cm back cushions (x2)
- 60x60cm back cushions (x2)
- 48x48cm optional cushions – box style (x2)



Straight sofa
\$17,945



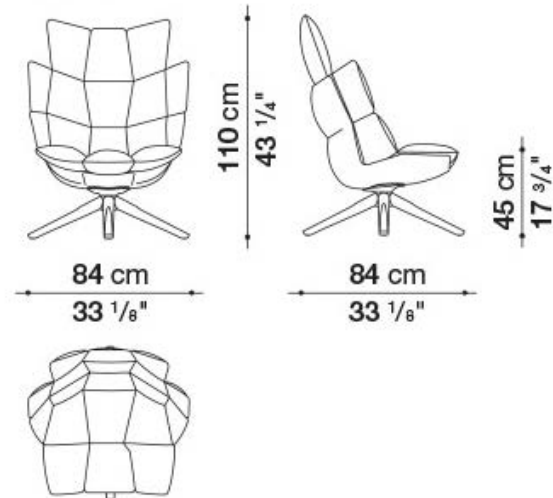
Husk

DESIGNED BY PATRICIA URQUIOLA

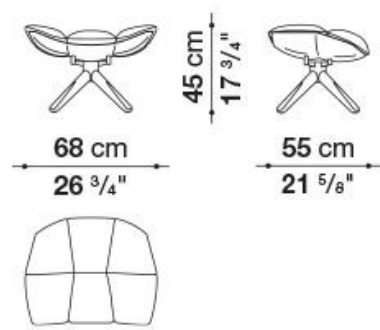
“Those who look at a sofa must visually perceive a sense of both mental and physical comfort.” Patricia Urquiola has conveyed this concept to the armchair Husk by designing a stiff body made of Hirek® that contains a soft cushion divided into portions, which seem to underscore its ergonomic profile. It is endowed with an original spirit that merges with various styles. Three cushion types: standard, which is large and enveloping, or headrest. With or without an ottoman as footrest.



H3G



HP4



Husk
Armchair & Ottoman
\$9,332

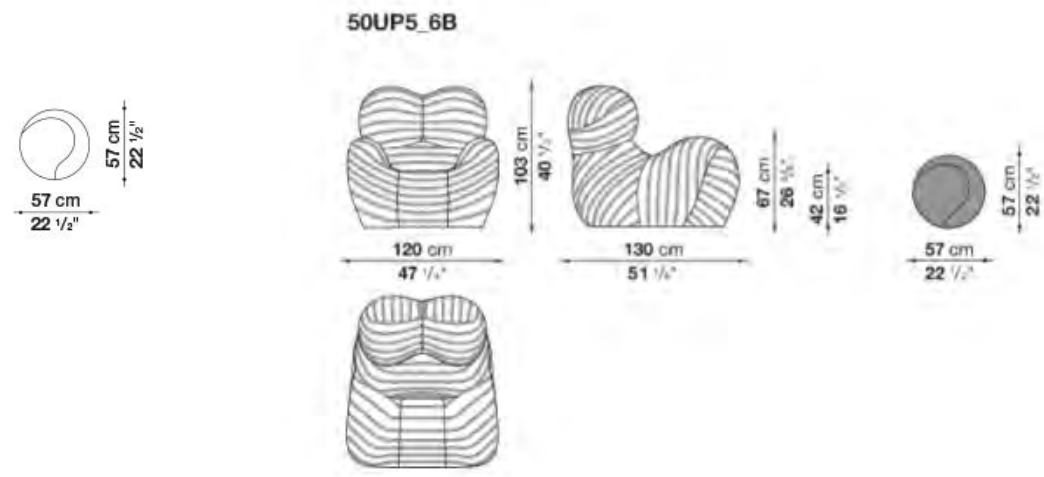
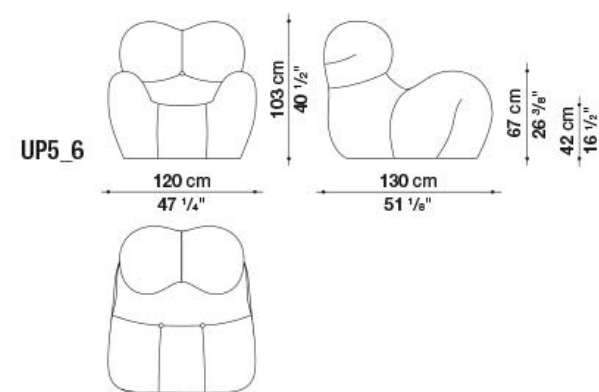
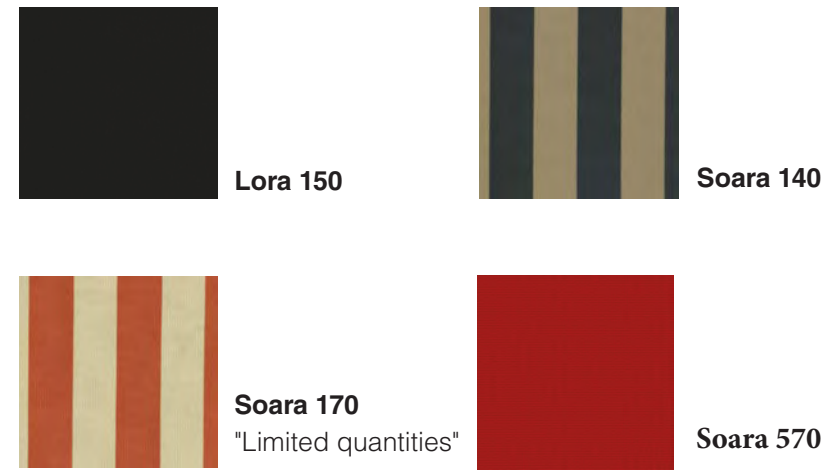


Serie UP 2000

DESIGNED BY GAETANO PESCE

The Up Series was designed in 1969 and has remained an iconic design piece within the B&B Italia collection.

The Up5_6 armchair, known for its striking representation of feminine strength and struggle, continues to be meaningful and relevant. It reflects a world sensibility with symbolism, irony, beauty and is truly the epitome of a timeless design.



UP5_6
"Limited quantities" Soara 170
\$6,511



50UP5_6
Soara 140
\$6,511

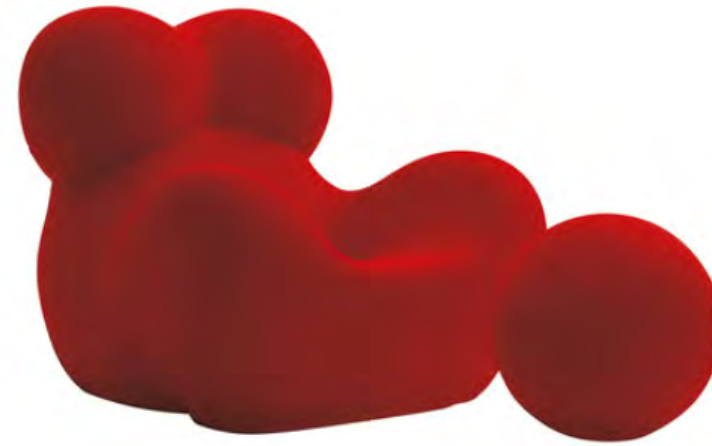


Serie UP 2000

DESIGNED BY GAETANO PESCE



UP5_6
Lora 150 - \$7,358



UP5_6
Soara 570 - \$6,018

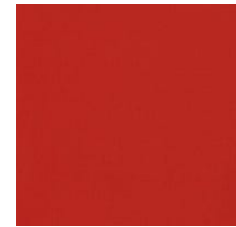


50UP5_6B
Soara 140 - \$6,511

Up Junior

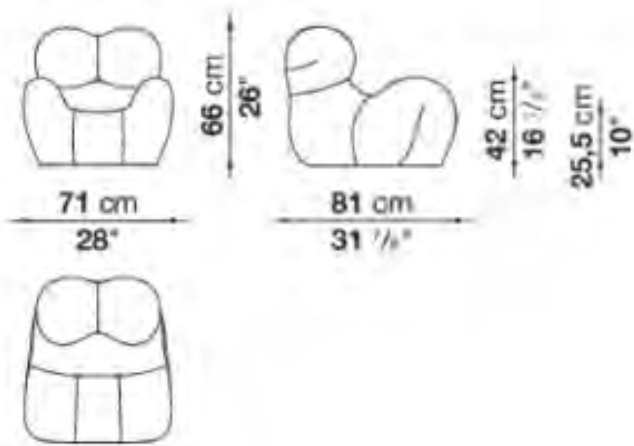
DESIGNED BY GAETANO PESCE

The history of design in miniature: UP Junior is a version for kids aged 3 and up of the UP5_6 armchair, an indisputable international icon of Italian design. UP Junior is a perfectly faithful replica of the original design, only smaller. Comfortable and playful, this designer seat features attractive shapes and lively textile covers in red and yellow, to furnish and enhance kids' areas and small city apartments.



Soara 700

UPJ



UPJ
\$1,825

Apollo

DESIGNED BY ANTONIO CITTERIO

Linear sofa in two sizes, curved sofa, sofa with chaise longue, dormeuse and swivel armchair: these are the different elements that make up this seating collection with its distinct personality. They all have pleasantly curved but rigorous form, creating a very harmonious balanced aesthetic. The backrest design, seat depth, contoured shapes and generous padding are all elements that make Apollo extremely welcoming and comfortable. A rich selection of upholstery includes a wide range of fine fabrics and leathers. The fabric covers are further embellished with relief stitching, while the leather covers feature elegant "envelope" stitching. The structure is defined by a painted aluminium border in a range of sophisticated colours: bronzed nickel, black chrome, graphite and amber.

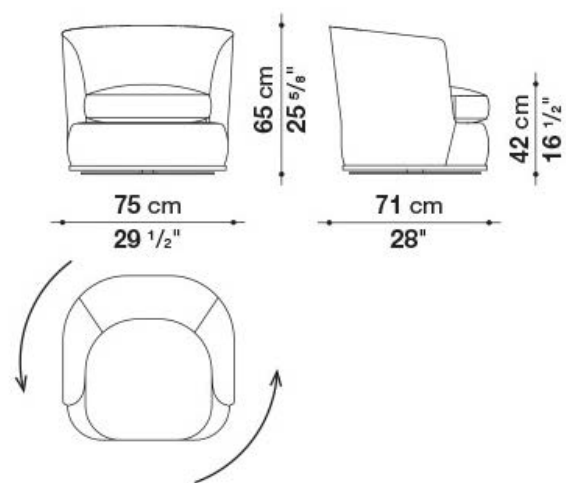


Saffira 153



Base: Graphite painted

APL75P



Armchair

Saffira 153 - \$5,275



MAXALTO

CHAIRS/ STOOLS

Husk Chair

DESIGNED BY PATRICIA URQUIOLA

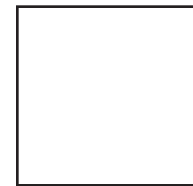
Comfortable, with a modern combination of base and seat, it picks up the profile of the namesake arm-chair. The body, which is shaped with a design that cites the capitonné style, conveys a feeling of softness; the cushions, in fabric or leather, fixed with press studs, are distinguished by the quilting. Many colour variants and combinations.



Edit 251

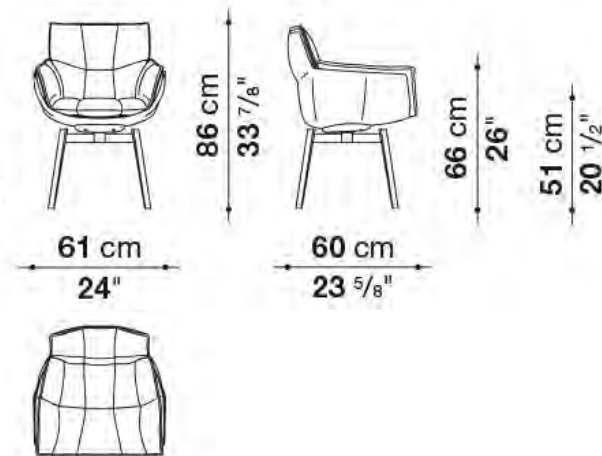


Frame: Black painted



Back: White Shell

P1GN



Husk Chair
\$2,158



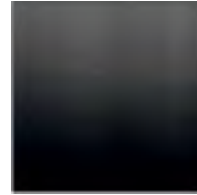
Charlotte

DESIGNED BY ANTONIO CITTERIO

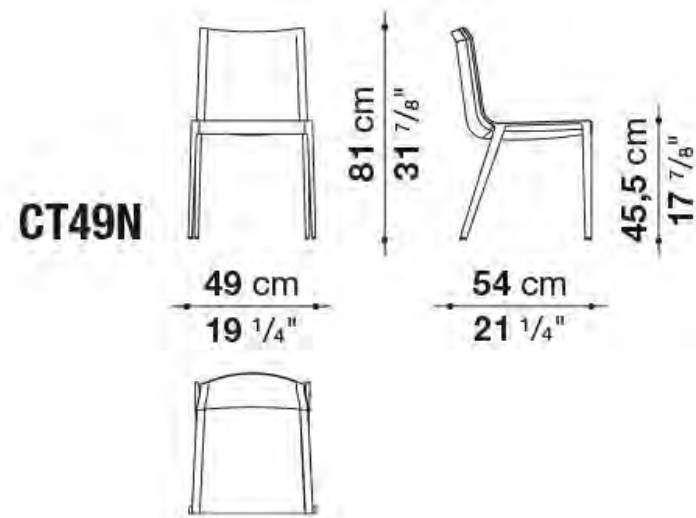
Charlotte by Antonio Citterio is a tribute to lightness. The shell is completely covered, but the frame profile is visible on the chair side, thus highlighting the line of the seat. The cover is in raw cut full grain leather.



Seat: Black embossed thick leather



Frame: 0170M Black chrome



Charlotte Chair
\$2,272



Papilio Stool

DESIGNED BY ANTONIO CITTERIO

Naoto Fukasawa, who favours the comfort of this product over the shape of the design, says, "I wanted the seat to look naturally comfortable, with the same shape relaxation would have if it were depicted with an image". The wings - armrests - placed on the sides of the seat enhance the comfortable feel. They support both sides and back of the stool.

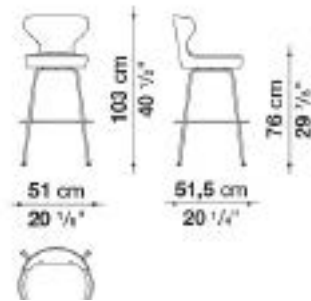


Seat: Este 150



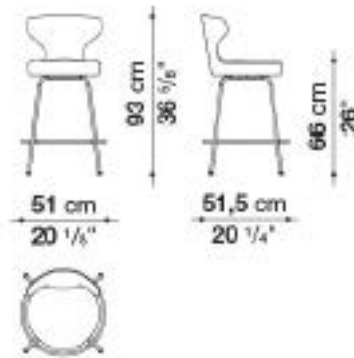
Frame: 0178C
Black chrome

SP51A



Low Stool
\$1,136

SP51B



High Stool
\$1,136



Papilio Dining Chair

DESIGNED BY ANTONIO CITTERIO

Naoto Fukasawa, who favours the comfort of this product over the shape of the design, says, "I wanted the seat to look naturally comfortable, with the same shape relaxation would have if it were depicted with an image". The wings - armrests - placed on the sides of the seat enhance the comfortable feel. They support both sides and back of the stool.

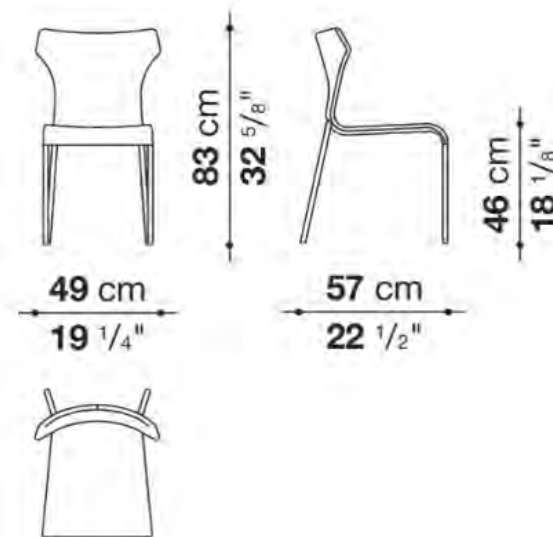


Seat: Serra 153



Frame: 0178C
Black chrome

PA



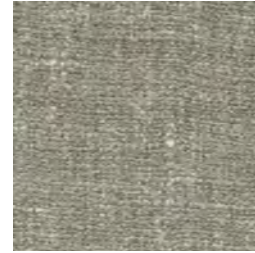
Papilio Chair
\$1,356



Caratos Chair

DESIGNED BY ANTONIO CITTERIO

Chairs in two versions, armchairs, ottomans and coffee tables are the new proposals that extend the Caratos series launched last year. These new items both reflect and strengthen the original designs' essential features while softening them by introducing embracing shapes. The light die-cast graphite or amber painted aluminium structure is retained, while padded backrests contribute to the formation of the armrests, creating seating with no postural restrictions at all, encouraging conversation and relations between neighbours. The ottomans and coffee tables echo the design of the frames and are ideal complements to the seats to create conversation areas and social settings. reveal new future surprises.

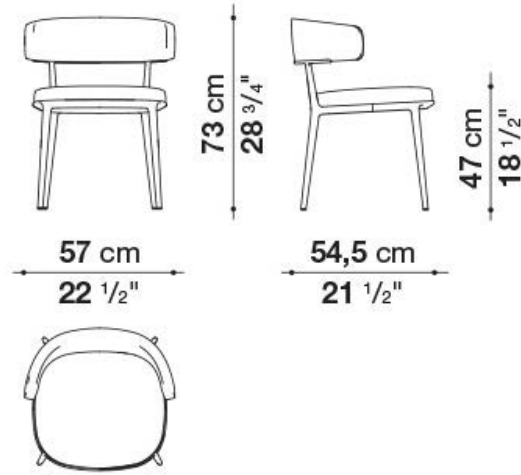


Lodi 257



Frame: Graphite painted

SCA57A



Caratos Chair
\$2,398

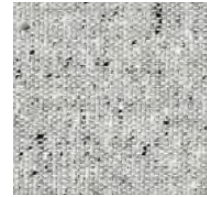


MAXALTO

Caratos Stool

DESIGNED BY ANTONIO CITTERIO

The Caratos range has grown and is ever expanding - providing a rich collection of ideas for the most diverse environments. The common thread of each piece is their recognisable die-cast aluminium base. In addition to the chairs and armchairs presented in 2017, Caratos presents a small armchair with armrest, an armchair, a tub armchair, two stools with swivel seats, a bench, an ottoman and a coffee table. The graphite and amber metal frames are accompanied by blue, amaranth, and cream painting, which complement the fabric covers. Noteworthy is the introduction of a soft, deep pile wool velvet that creates a "teddy bear" effect. With this new collection, Caratos proves to be a group of flexible products that will reveal new future surprises.



Edit 253

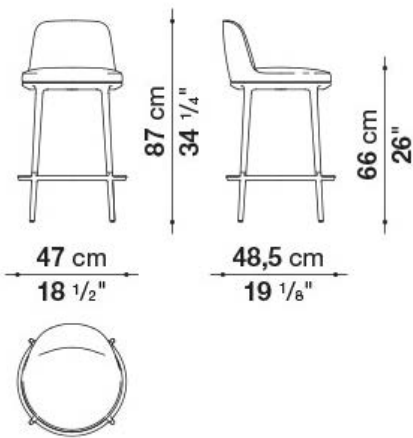


Lower frame:
Bright brushed

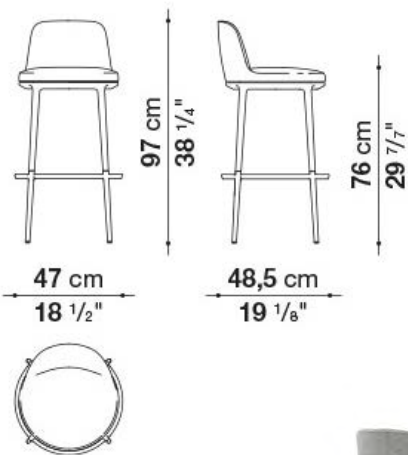


Frame: Graphite painted

CA87ST



CA97ST



Caratos High/ Low Stool
\$2,097



BEDS

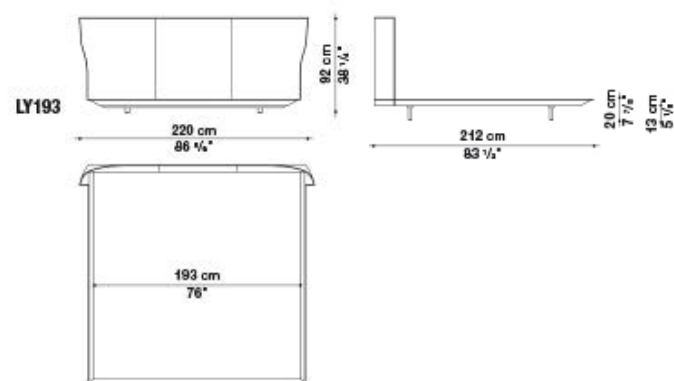
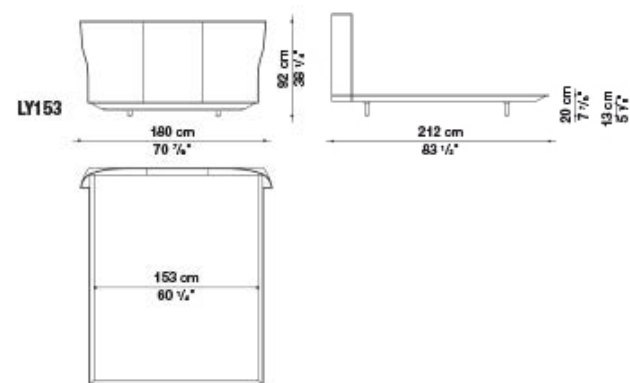
Alys

DESIGNED BY ANTONIO CITTERIO

A sheet of leather "pinched" in two places at the base: here is where the movement and natural inclination of the Alys headboard originate. The Buratti brothers are once again managing a material that they know well because they've already used it on the Doyl chair when they explored the theme of upholstered leather, made more comfortable than with traditional processes. For Alys, they designed a comfortable, protective headboard, a very effective shape that has thin perimeter strips marked by a lengthwise seam. The bed frame can be placed at two different heights, thanks to a standard equipment made of two sets of feet (h. 5cm or 15cm). The bed surface was designed to be low specifically to suggest an effect of suspension and floating of the super-comfortable mattress.



Tortora 280
Thick leather



Alys Bed

Queen size - \$12,179

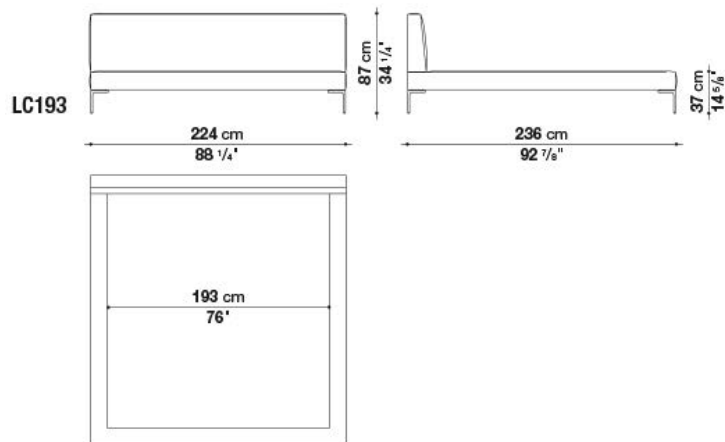
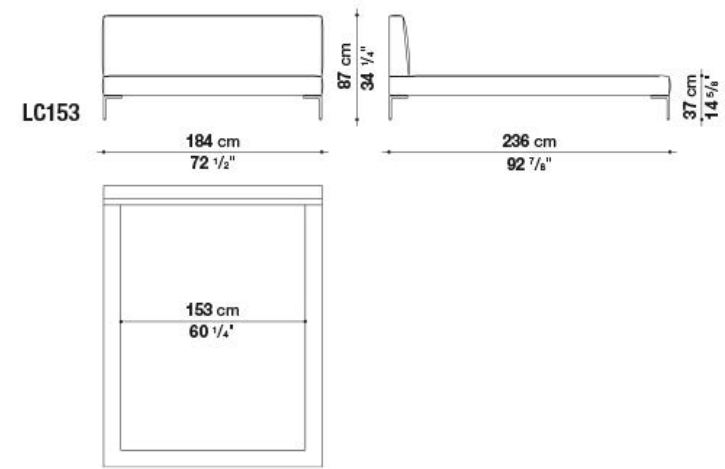
King size - \$13,679



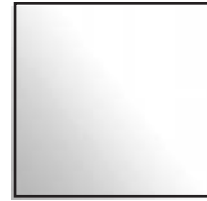
Charles

DESIGNED BY ANTONIO CITTERIO

The Charles bed conserves the classic "inverted-L" shaped aluminium feet that are the distinguishing trait of the entire product family. The Charles uses a pressed and curved beechwood slatted base to provide independent support for each part of the body, ensuring a comfortable and healthy sleep. King and Queen sizes available through quick ship program.



Edit 153



**Feet: 0189A
Bright brushed**



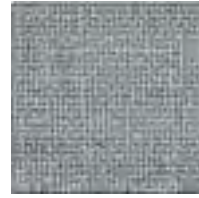
Charles - Edit 153
Queen size - \$7,202
King size - \$7,715



Richard

DESIGNED BY ANTONIO CITTERIO

The design of the new Richard bed is defined by a high bed side running along the perimeter of the bed and the sartorial detail of stitching with the insertion of a raw cut profile. The height of the lateral bed sides allows inserting any type of mattress supports, from metal to wooden slatted base or an "under mattress" with springs, or slatted base with manual mechanism.



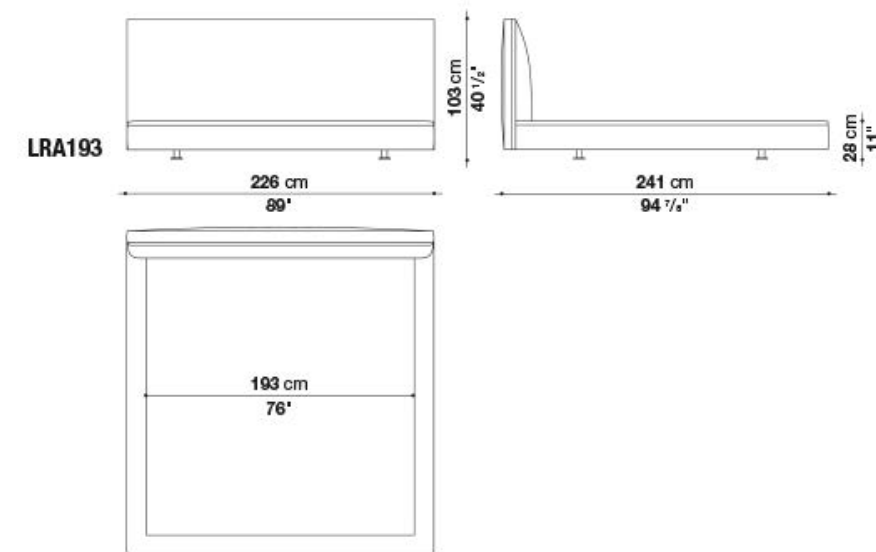
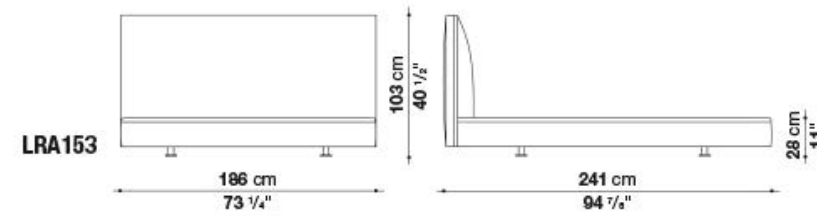
Astro 253



**Feet: 0150L
Black painted**



Profile: Black



Richard Bed - Astro 253

Queen size - \$8,422

King size - \$8,930



Febo

DESIGNED BY ANTONIO CITTERIO

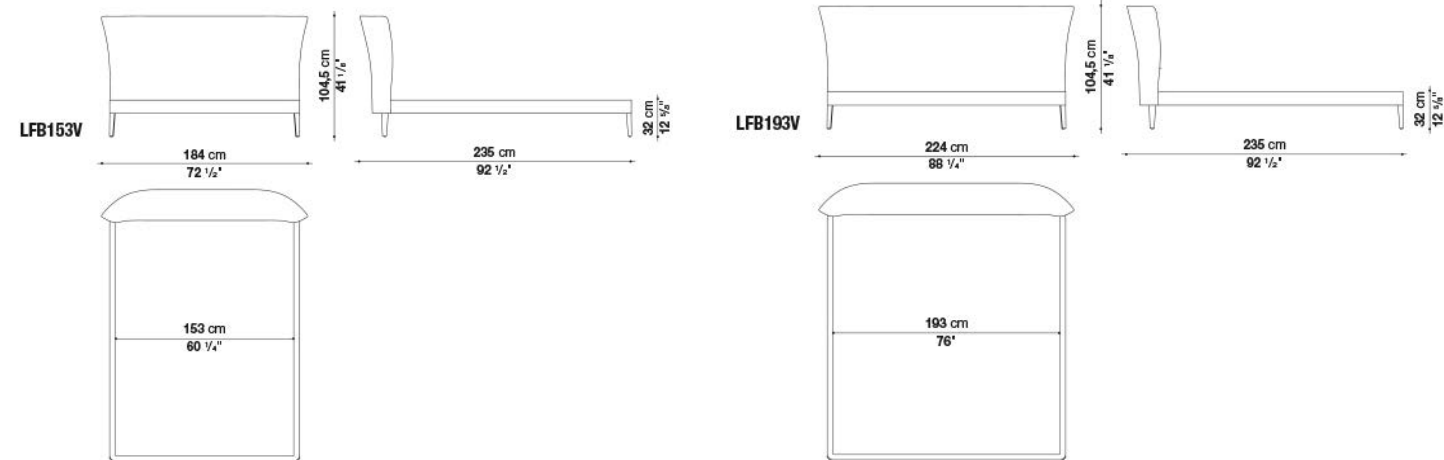
The bed version of Febo is available in six different sizes with an elegant headboard and the added comfort of two back cushions. For all elements are available the same characteristic of the collection: the single material and the visible blanket stitch.



Lodi 251



Stitching: Sella 1060



Febo bed - Lodi 251
Queen size - \$9,200
King size - \$10,110



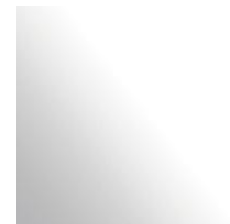
Noonu

DESIGNED BY ANTONIO CITTERIO

A brand new element in the Noonu archipelago is the bed. Its lines echo the design of the sofa, in particular the headboard, an element that instantly stands out for its understated grandeur, attracting the eye and enveloping the body. In pure Noonu style, the underlying frame is slightly suspended off the ground as if floating on the floor. At the base of the bed we find the usual metal profile in curved aluminium, available in bright brushed, black chromed and pewter grey versions. As with the whole Noonu range, the bed can be covered in leather or fabric. For ease of movement, the bed can rest on four fixed feet or on two fixed feet and two wheels, positioned inside the frame to remove them from view.



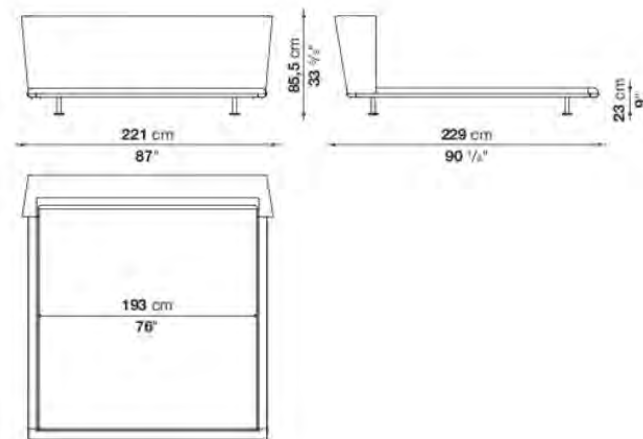
Sara 259



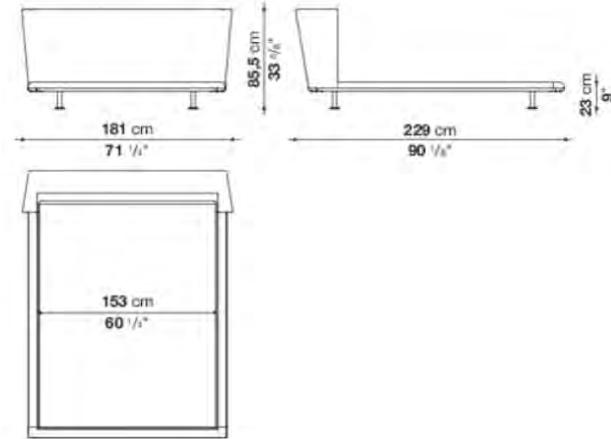
Bright Brushed Aluminum



LN193



LN153



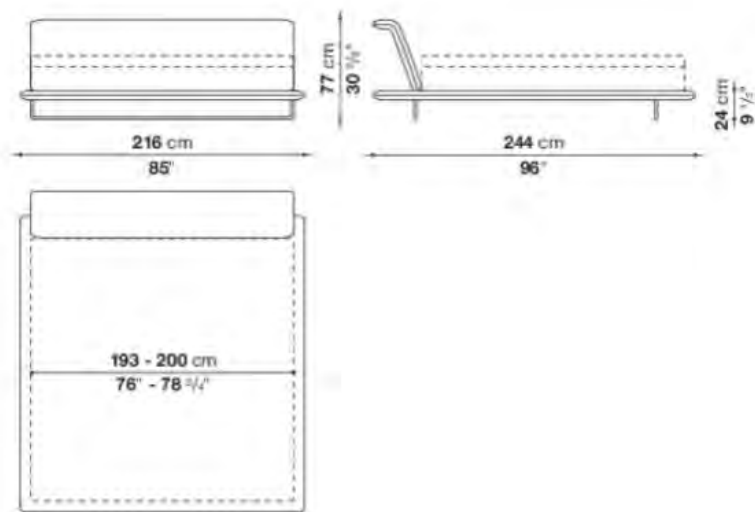
Noonu Bed - Sara 259
Queen size – \$7,999
King size – \$8,621

Siena

DESIGNED BY NAOTO FUKASAWA

From the very first glance the Siena bed's airy image is striking with the projecting base that defines the entire perimeter of the bed and which, at the back, becomes a convenient surface to place books and accessories. The backrest is inclined to offer an ideal relaxing position. Impressive from behind, it can even be placed at the center of the room.

LSI216



Asolo 102



Siena bed - Asolo 102
King size - \$8,304



MAXALTO

**DESKS/ TABLES/
SMALL TABLES**

Eileen Desk

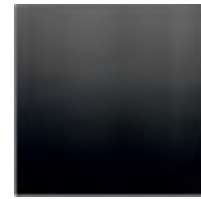
DESIGNED BY ANTONIO CITTERIO

The curved wood top that conveys softness to the wood is applied to a light writing desk with drawers and designed to be fitted with the most advanced technologies. Also available with thick leather covered top.

***Drawer can be relocated on either left or right side of the desk.

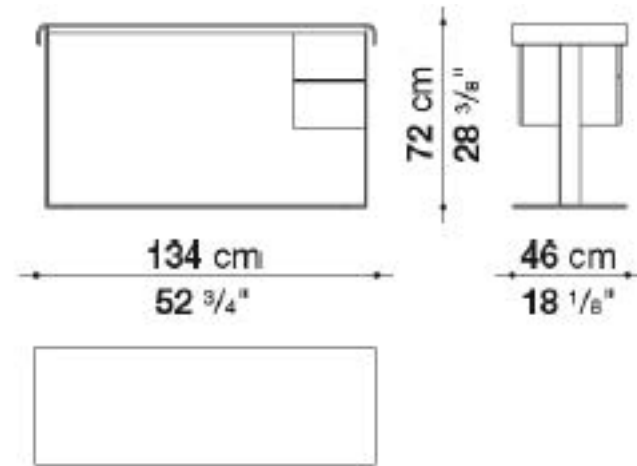


Top: Black oak



Leg: Black chromed

SE134



Writing Desk

Brushed black oak,
Black chrome frame - \$7,784

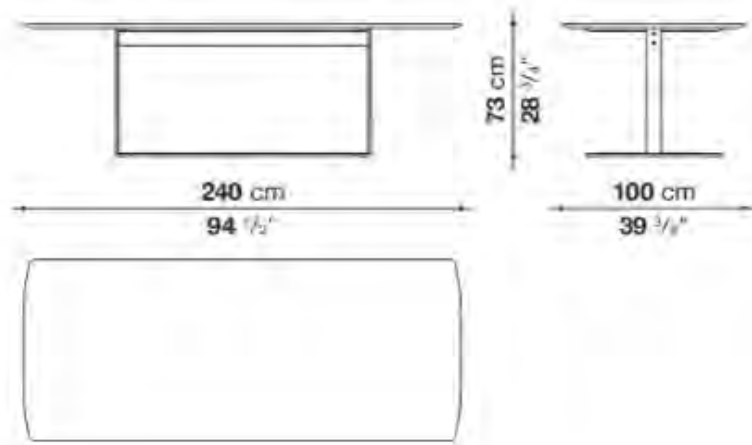


Eileen

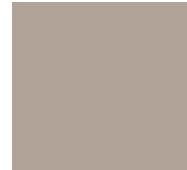
DESIGNED BY ANTONIO CITTERIO

The Eileen tables are classics today with their versatile features, the elegance of the rounded top and the strong profile of the base with its cross-shaped motif. They are the expression of refined aesthetics that combine well with other products.

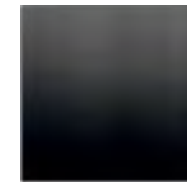
TEL240



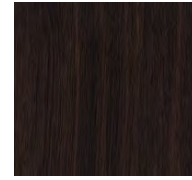
Top:
Marquinia
black marble



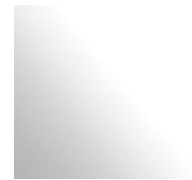
Top: Deserto



Leg: Black chromed



Top: Smoke Oak

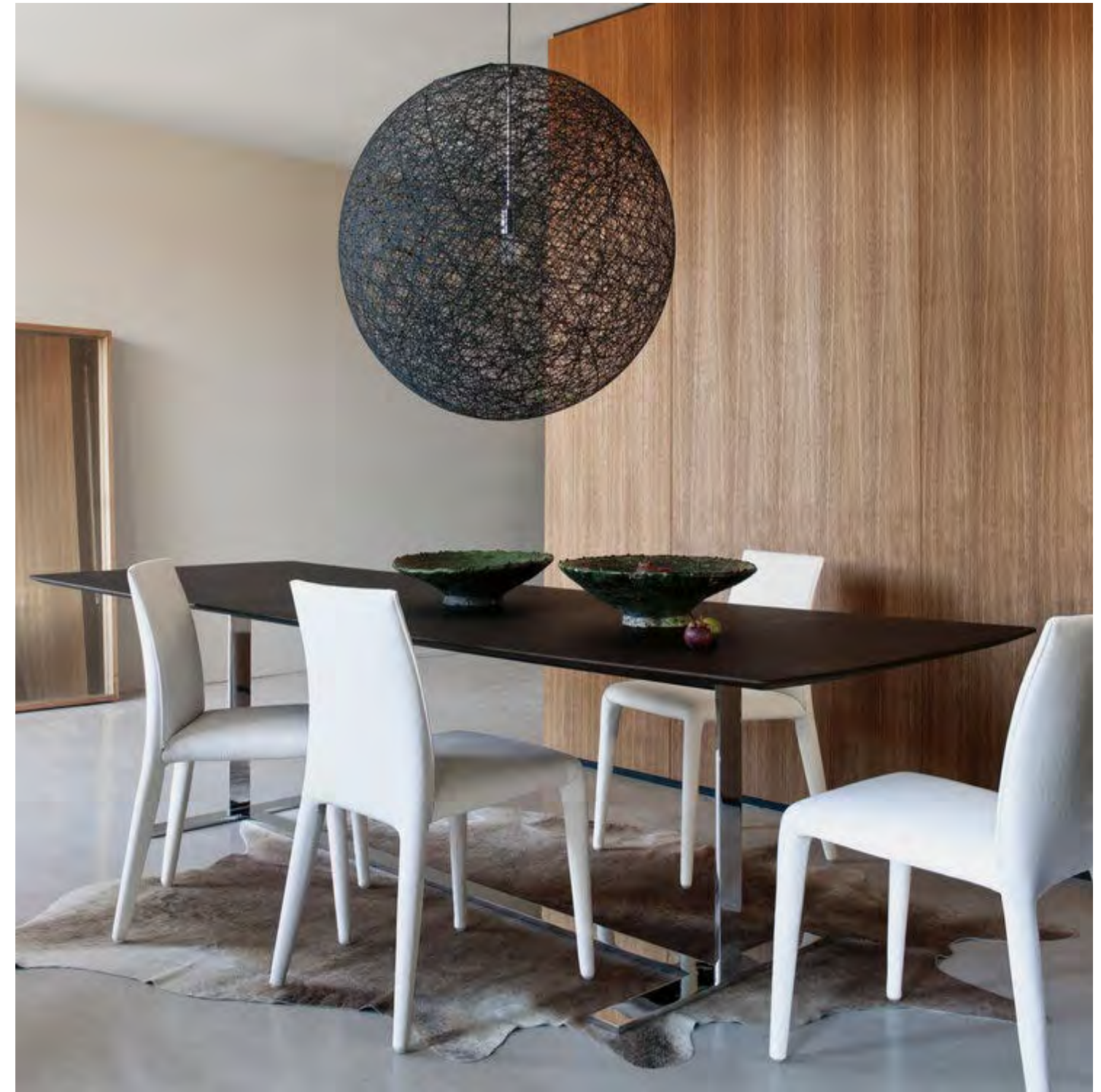


Leg: Bright chrome frame



Dining Table

Deserto, Bright Chrome Frame - \$11,012



Eileen

DESIGNED BY ANTONIO CITTERIO



TEL240C

Smoke Oak, Bright Chrome Frame – \$10,681



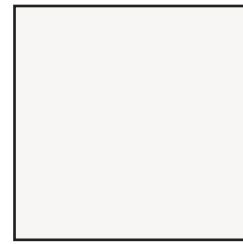
TEL240C

Matt Maquina Black Chrome – \$12,804

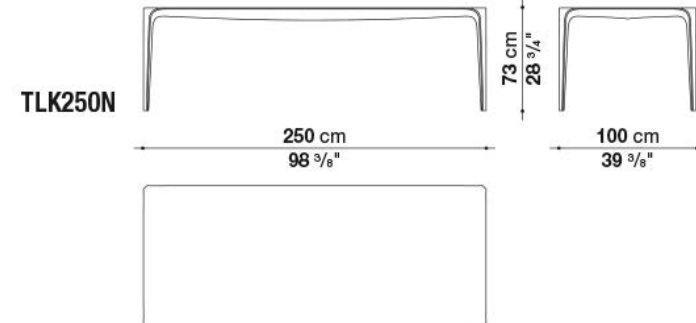
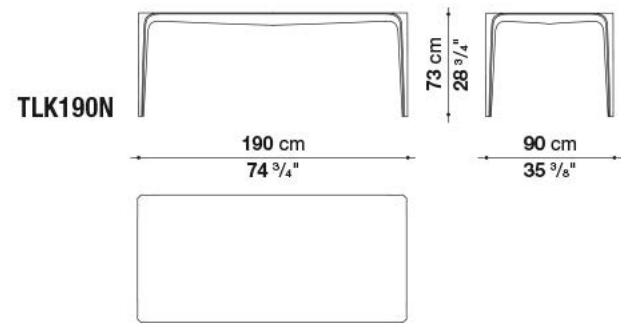
Link

DESIGNED BY JAKOB WAGNER

A single piece, moulded, continuous, with no joints. The Link's distinguishing feature is its "soft" texture and the sensuality of its shape and material. Made of Cristalplant®, the table is cast in a single mould and does not require connecting elements. The Link comes in two rectangular models which is produced only in a white colour.



0101G
White Cristalplant®
Outdoor



Dining Table (cover included)

TLK250N - White Cristalplant® - \$13,787

TLK190N - White Cristalplant® - \$10,381

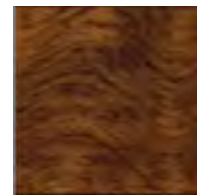


Mirto Indoor

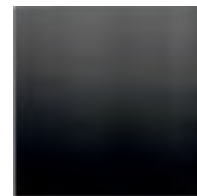
DESIGNED BY ANTONIO CITTERIO

The components are characterized by a simple design of reduced thickness that offers specific details and a wide array of materials and finishes.

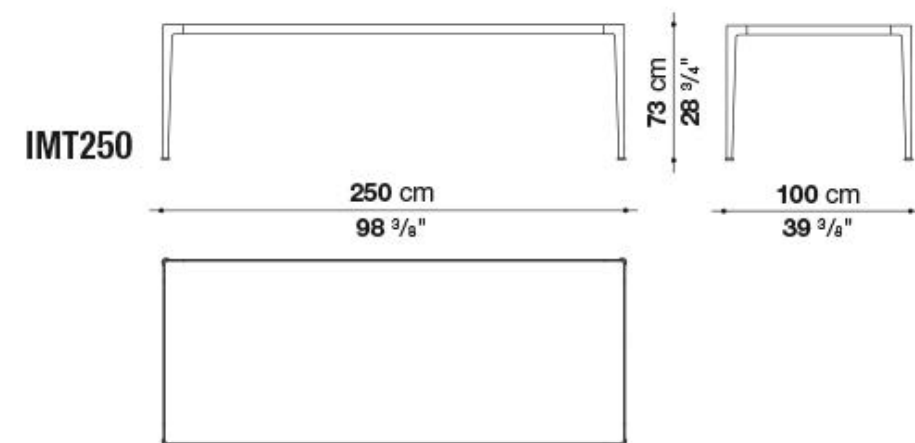
Available in quick ship program the rectangular version 250 cm, with glossy frisé eucalypt top and black chrome die-cast aluminium base.



Top: 0498E
Glossy Frisé Eucalypt



Legs: 0170M
Painted Black Chrome



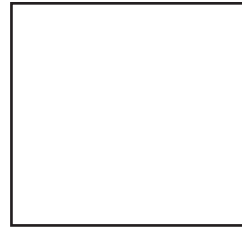
Dining Table
"Limited quantities"
Glossy Frisé Eucalypt,
Black chrome frame
\$11,578



Tobi-Ishi

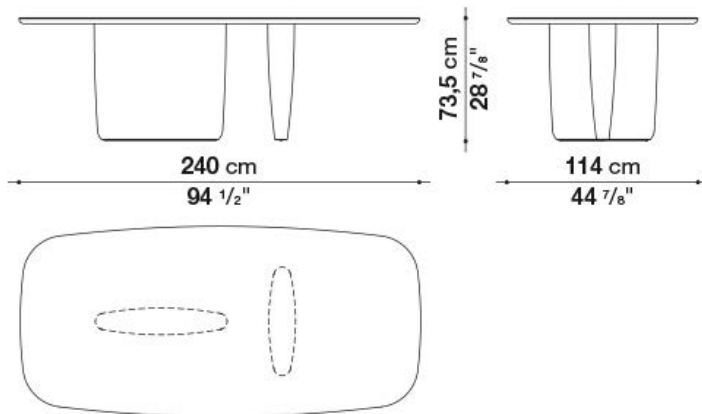
DESIGNED BY ANTONIO CITTERIO

Edward Barber & Jay Osgerby first project for B&B Italia was Tobi-Ishi, a round dining table clearly inspired by Zen. The design duo are great enthusiasts of Japanese art and culture and the name and concept for this table came from the smooth stones (tobi-ishi) used as ornaments in traditional Japanese Zen gardens. The overhang of the table and the vertical trapezoidal bases set at right angles generate an essential sculptural figure that appears to change shape depending on the point of observation.



9118E
Chalk White Satin

T240R



Dining Table

Chalk White Satin 9118E
\$9,821



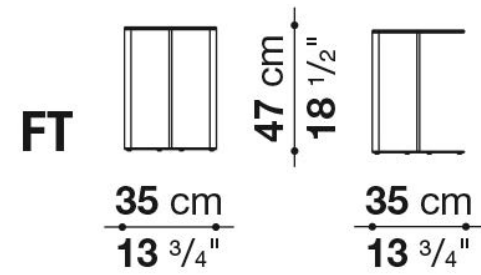
Frank

DESIGNED BY ANTONIO CITTERIO

A large family of storage units enhanced by chromatic variations and plays of bright and matt finishes, while maintaining the formal rigour of the design. They are customised by an important detail: the greater depth of the tops and sides, as compared to the drawers, that contribute a sense of depth to the front. Chest of drawers that develop vertically or horizontally are placed beside elements that are less deep, with fronts that alternate empty portions and drawers, designed for use at the bedside.



0174B
Bronzed Nickel Painted



Side Table

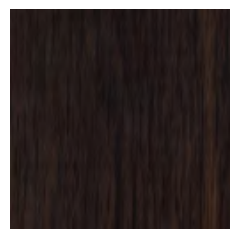
"Limited quantities" Bronzed nickel painted \$1,746



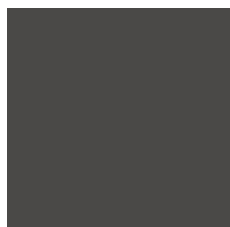
Astrum

DESIGNED BY ANTONIO CITTERIO

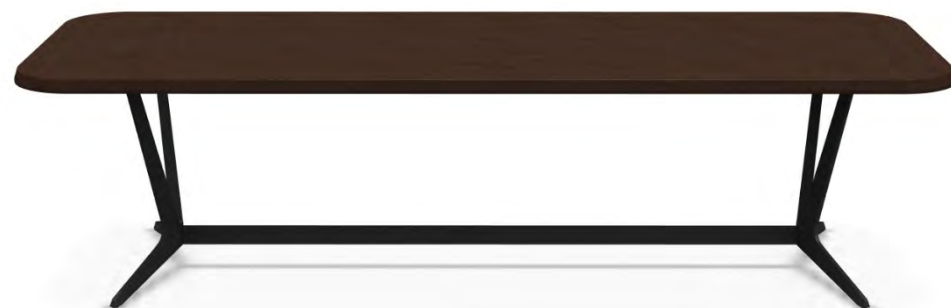
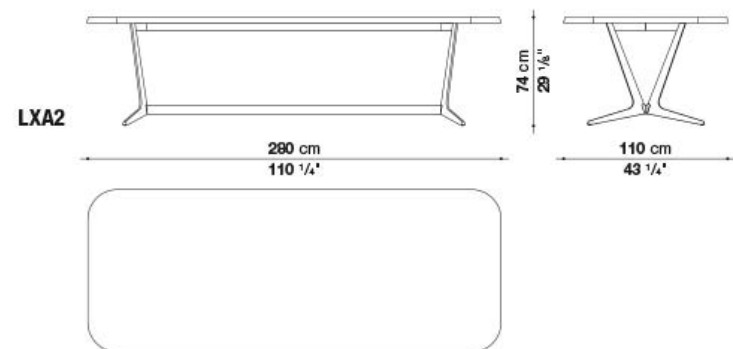
Astrum is the new table collection, rectangular, round and oval, distinguished by the special "sawhorse" base-frame. The frame is made of a single die-cast aluminium support with graphite or amber painted finish that, based on the table shape, is composed of two or three elements connected by a crosspiece and forming the base-frame for rectangular tables (width cm 100 and three lengths cm 230, 280 and 340), while three elements connected at the base of a steel ring establish the support for round tables (diameter cm 165 and 200). The triangular section of the support, raised from the ground with a slight tilt, gives the structure both lightness and solidity. The tables tops are provided in various finishes of wood and marble: brushed light, grey, brushed black and smoked oak, or in natural wenge with the possibility of a central marble section; white Calacatta, black Marquinia, green Guatemala and Emperador marble, all with a glossy finish, giving the table a more elegant look. Only with the round versions, it is possible to insert a swivel tray into the wooden and marble finishes.



Top: 0370F
Smoke Oak



Frame: 0252G
Graphite painted



Dining Table
Smoked Oak, Graphite Painted
\$11,854



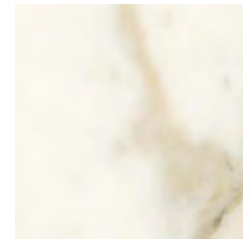
MAXALTO

Lithos

DESIGNED BY ANTONIO CITTERIO

Square, rectangular or circular in shape and set in the centre of a room or next to the sofa, the Lithos collection include tables with tops in black Portaro marble, black marquina marble, white Calacatta marble and beige travertine marble. They are also available in a wooden version with slatted upper and lower surfaces in grey oak, brown oak, light brushed oak or black brushed oak finishes. The frame is in painted bronzed nickel steel.

Through this program it is available as a square low table 35 3/8" x 35 3/8" with a Calacatta marble top.

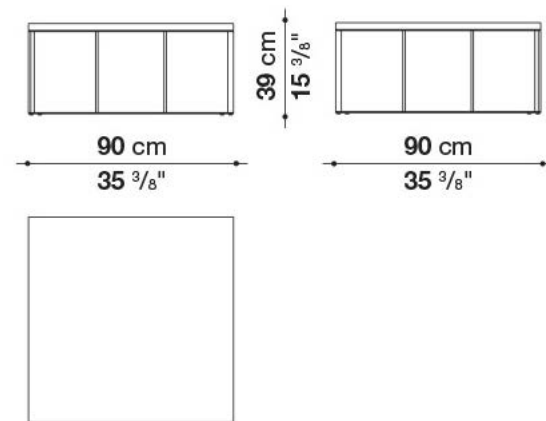


Top: 0184P
Glossy Calacatta marble

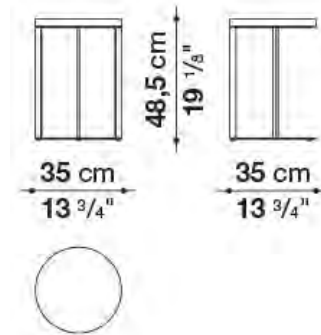


Frame: 0174B
Bronzed Nickel Painted

SMTM6M



SMTT3BM



Small table

SMTM6M- calacatta marble -\$6,211

**Limited Quantities

SMTT3BM- calacatta marble -\$2,031

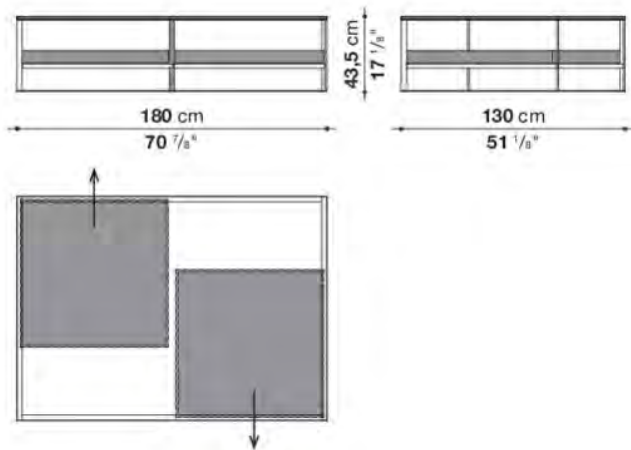


Lithos

DESIGNED BY ANTONIO CITTERIO

Ideal for both homes and commercial spaces, to be placed also in the centre of the room, these pieces allow their contents to be viewed, extracted and repositioned easily with perfect order. The low tables are available in two versions (cm.90x130x43h. and cm.180x130x43h.), both with extractable trays.

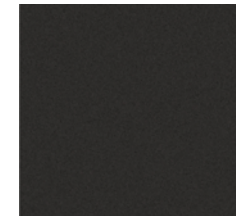
TLT18



**Top: 0370F
Light Oak**



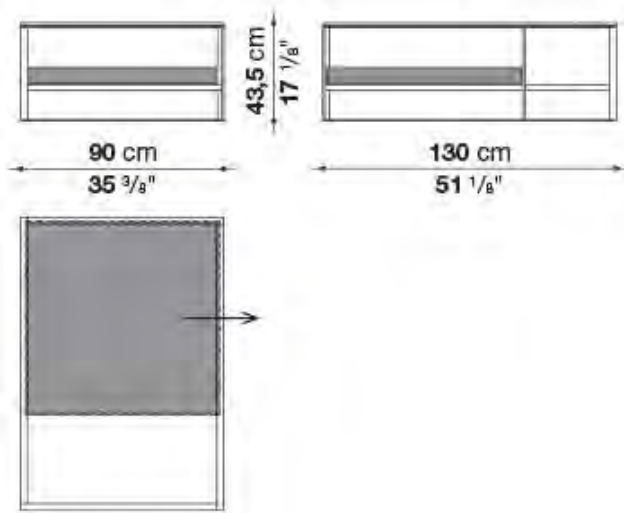
**Leather lining/
Alfa 571**



**Frame: 0170M
Painted Black Chrome**



TLT13



Small table

TLT13 – Brushed Light Oak, Alfa 571, Graphite painted - \$7,906
TLT18 – Brushed Light Oak, Alfa 571, Graphite painted – \$12,548



MAXALTO

Awa

DESIGNED BY NAOTO FUKASAWA

Elegantly asymmetrical, Awa is a versatile object, a service table to be placed wherever a support surface is needed. It is available in white Cristalplant®, a material suitable to be used both indoors and outdoors, and in hard polyurethane in many satin and glossy colors that bring an energy boost to any room and style.

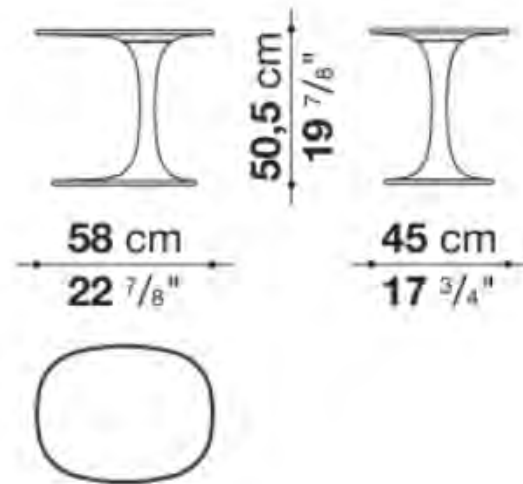


1263E
Satin Mustard



3780L
Glossy Olive

AW58T



Side Table

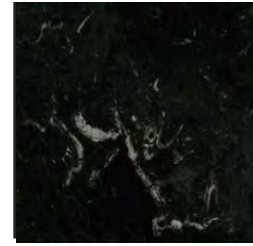
AW58T - Satin Mustard - \$1,799
AW58T - Glossy Mustard - \$1,912



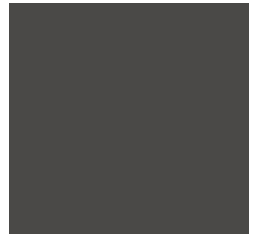
Caratos

DESIGNED BY ANTONIO CITTERIO

Completing the family of seats of the same name, the Caratos small tables stand out for the rounded lines of their tops in marble with a matt finish. The soft, rounded frames are in painted die-cast aluminium. These tables can be paired with sofas and chairs to create living areas and encourage conversation.

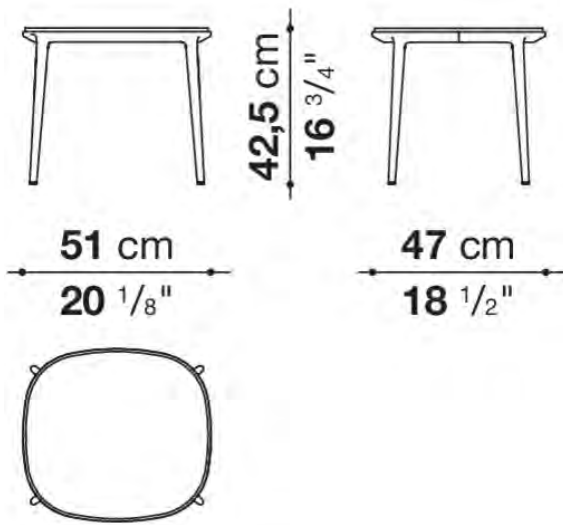


0185P
Matt Marquina black marble



0252G
Graphite Painted Aluminum

TCA51A



Side Table

TCA51A - Matt Marquina Black Marble - \$2,167

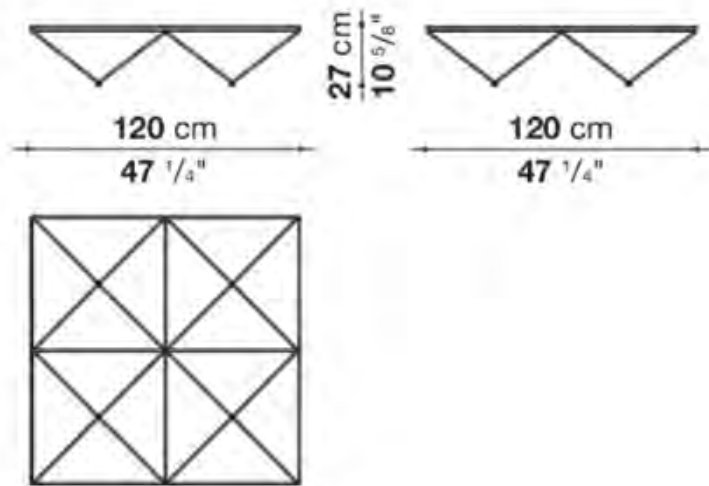


Alanda

DESIGNED BY PAOLO PIVA

The Alanda coffee table, an iconic piece that ushered in the 1980s, is now revisited in homage to Paolo Piva, the great architect and designer. A highly successful classic and sought-after vintage furnishing complements, Alanda is one of the most typical design objects of a period with a wealth of strong, daring stylistic signs, often in a dialogue with architecture, reproducing its most attractive, characteristic elements in miniature. The Alanda's structure, serving as both pedestal and support, recalls a group of upturned pyramids, a geodetic frame that has always characterized it as if it was a magical object, entrapping and amplifying cosmic energy. Alanda '18 is offered in two sizes with structure in painted steel rod and glass top.

TA120



0200T
Transparent extra light glass



0125N
Glossy black painted



Coffee Table

TA120 – Extra light Glass – \$2,318



Allure

DESIGNED BY MONICA ARMANI

The Allure O' table is presented as a heart-felt tribute to glamour interpreted in contemporary style. The graceful force of its design is clearly seen in the shape of the top and the balance between the control of straight lines and sinuosity of curves. In an interplay of elliptical geometric shapes that recalls the Madison mirror, designed by Monica Armani in 2017, this piece renews the reference of the shape of Jackie O' s iconic eyeglasses. Allure O' is available with a square or rectangular top, both with bevelled edges, and each comes in two sizes to seat four, six, or even eight people. The section of the truncated pyramid base replicates the rigorous balance of the top with delicate proportions to create a level of harmony that can guarantee structural and visual stability. The finishes underscore the sophisticated elegance of the inspiring concept behind it. These pieces are available in glossy and matte painted finishes in many colors, and also in light and black oak wood. The top and base can also be finished in combinations of different colors



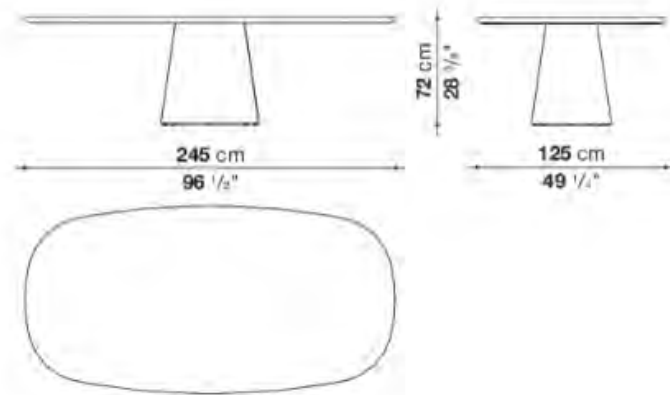
1322E
Satin Pearl White



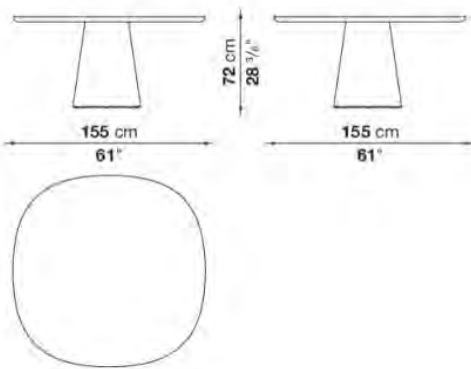
0381N
Brushed black oak



TAO245



TAO155Q



Dining Table

TAO245E - Brushed black oak - \$15,606
TAO155QS - Pearl white satin, Grey base - \$9,247

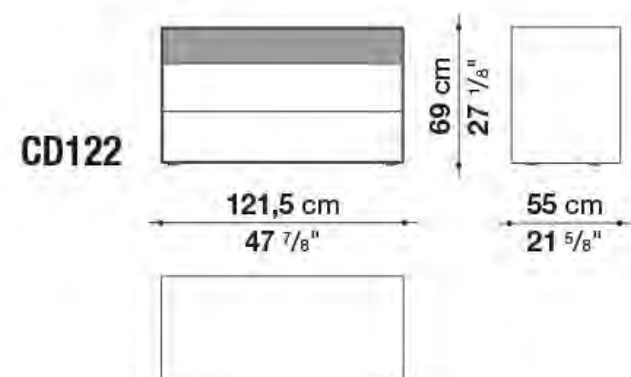
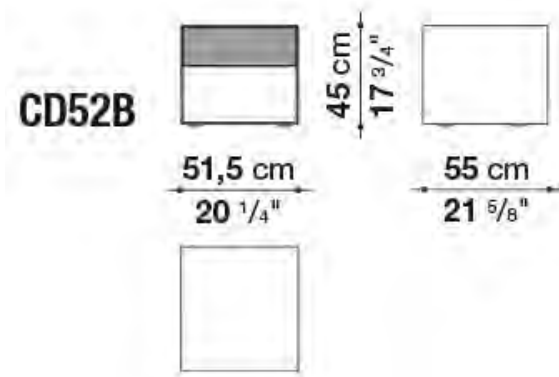


STORAGE UNITS/ COMPLEMENTS

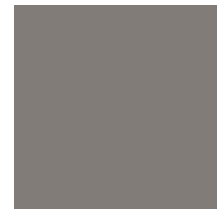
Dado

DESIGNED BY STUDIO KAIROS

A large family of storage units enhanced by chromatic variations and plays of bright and matt finishes, while maintaining the formal rigour of the design. They are customised by an important detail: the greater depth of the tops and sides, as compared to the drawers, that contribute a sense of depth to the front. Chest of drawers that develop vertically or horizontally are placed beside elements that are less deep, with fronts that alternate empty portions and drawers, designed for use at the bedside.



1322E/ 1322L
Satin/ Glossy Pearl White



2557L
Glossy Greige



Storage Unit
Small drawer - \$2,621
Dresser - \$5,885



Madison Mirror

DESIGNED BY MONICA ARMANI

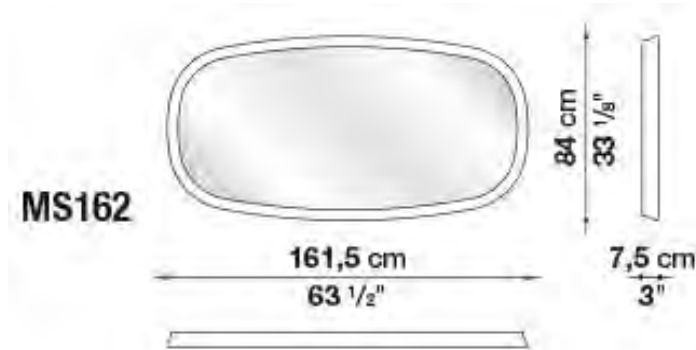
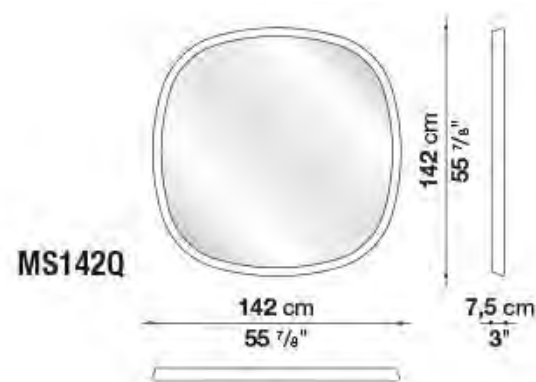
With oval round or rectangular beveling and in oversize dimensions (diameter cm 142 and cm 161,5 x 84) that can be attached vertically or horizontally to the walls; Monica Armani mirrors create a play of reflections and light in the rooms.



0759R
Rosy bronze painted



0174B
bronze nickel painted



Mirror

MS142Q - Rosy bronze painted - \$3,481

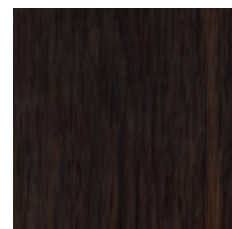
MS162 - Bronze nickel painted - \$2,866



Amphora

DESIGNED BY ANTONIO CITTERIO

Perfect to be placed next to the bed, Amphora is presented in two versions: one has compact oval shape and holds two drawers of different sizes, the second one has a refined metal structure and hold one single drawer.

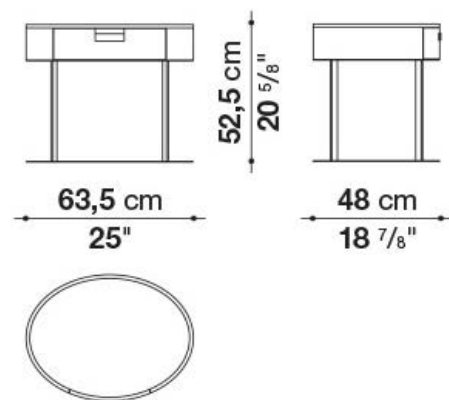


Top: 0370F
Smoke Oak



Frame: 0252G
Graphite painted

2424



Storage Unit
Smoke Oak, Graphite painted
\$4,136



MAXALTO

Psiche

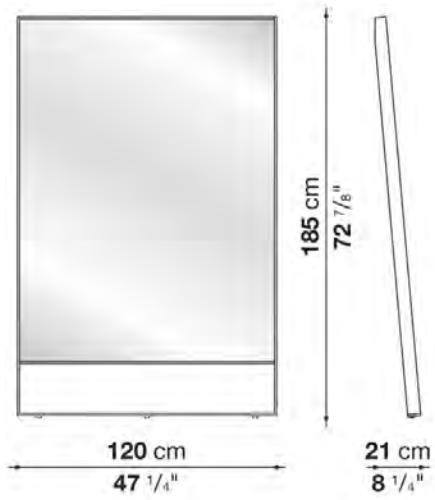
DESIGNED BY ANTONIO CITTERIO

A mirror with bright chromed steel; that thanks to the angled top, can be leaned against a wall. Proposed not only for the bedroom, it can also be used in a living area to make the ambience seem larger.

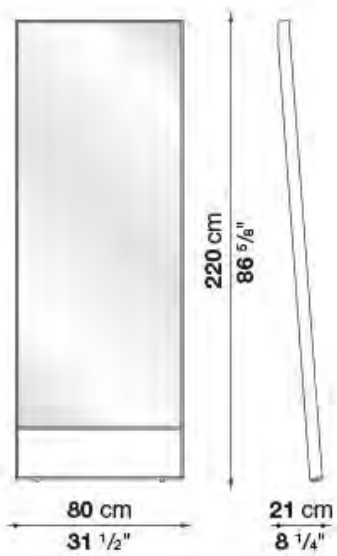


0110M
Bright chrome steel

SMS2



SMS1



Mirror
"Limited quantities"
SMS1 - \$3,983
SMS2 - \$4,278



MAXALTO

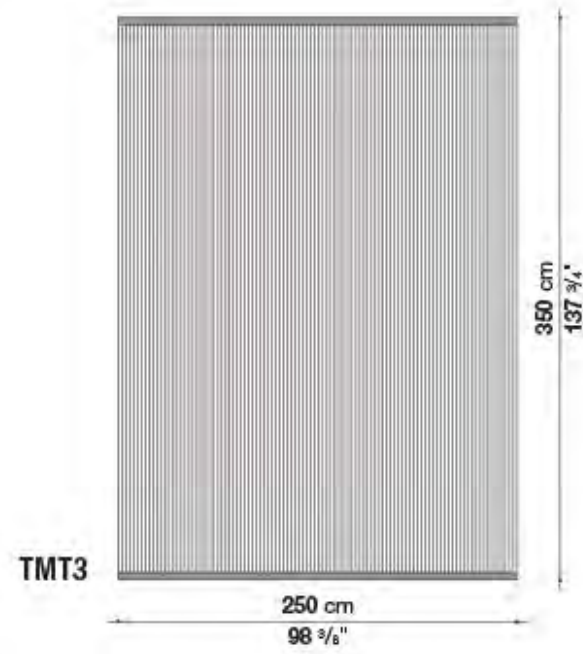
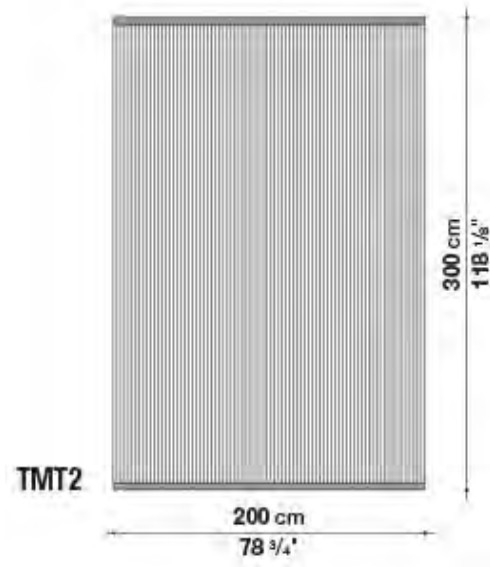
Timo Rug

DESIGNED BY JUMA

Carpet in 100% wool available in a rectangular version in three measures (cm 200 x 300 - cm 250 x 350 - cm 300 x 400) in grey, dark grey and black colours.



0022G
Grey color



Rugs

TMT2 - \$3,695

TMT3 - \$5,344

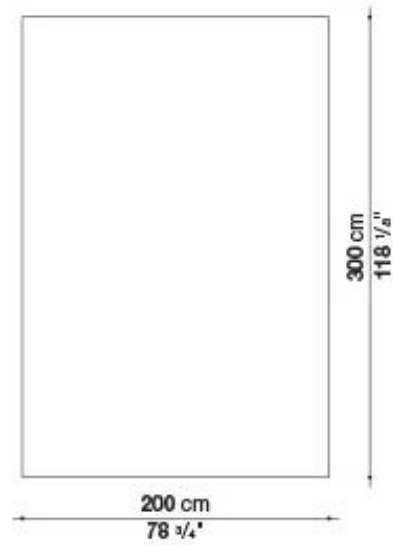


Milos Rug

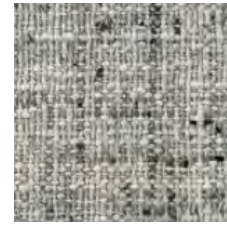
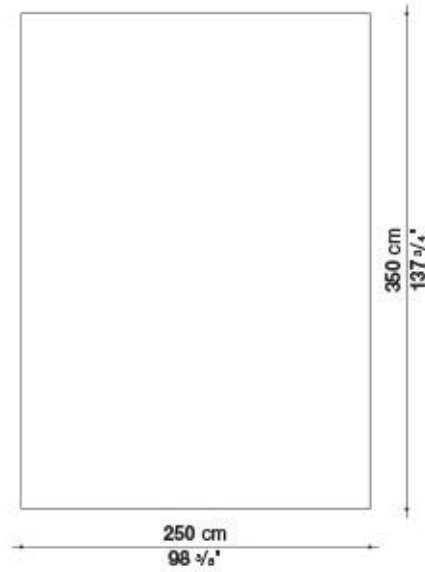
DESIGNED BY JUMA

Carpet in 100% wool available in a rectangular version in three measures (cm 200 x 300 - cm 250 x 350 - cm 300 x 400) in grey, dark grey and black colours.

ML2T



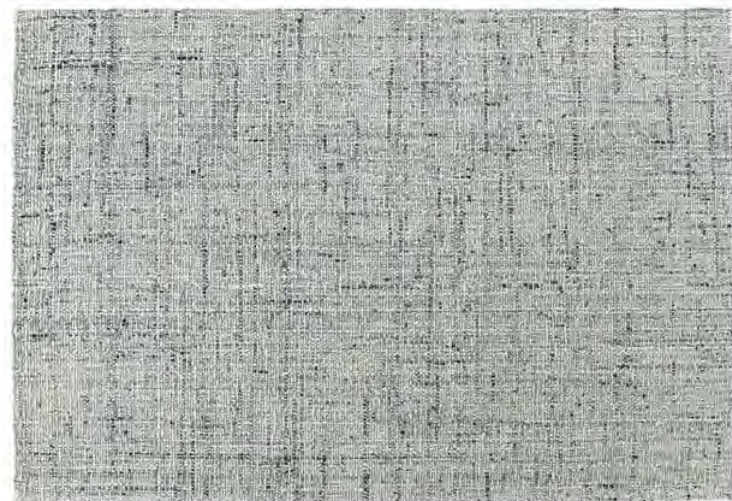
ML3T



0217G
Graphite color



0134Q
Quartz



Rugs

ML2T - \$2,736

ML3T - \$3,990



Covers and Woods

Exclusive collections and ingenious solutions conceived to emphasize taste and elegance in interior furnishings. Let every aspect of the home convey the fullest expression of comfort and refinement. Enter an atmosphere designed by B&B Italia.

FABRIC

Exceptional weaves of linen, hemp and cotton allow us to make covers that become expressions of creativity and elegance. The material, the unique craftsmanship combined with traditional weaving practices, and the quality of texture and thread count combine to equal an unparalleled elegance.

From the feel of the natural fibre to the richness of the visual appeal, these fabrics can turn any space into a place of well-being and relaxation. Discover the pleasure of being surprised by the beauty and taste of your home.

LEATHER

The skins selected by B&B Italia are obtained from European-bred calves. They are the best possible product for furnishings available throughout the world. The entire processing system is aimed at preserving the exceptional natural features of leather, including certain anomalies produced by the life of the animal, such as scars, abrasions, insect bites, etc.

These characteristics are the tangible proof of the natural origin of the product and are the features that attest to the great quality of the leather.

B&B Italia leathers are chrome-tanned and aniline-dyed; treatments that help preserve the natural qualities of the product. The exclusive tanning process allows us to obtain leather with an unmistakable softness that is very pleasing to the touch.

WOOD: A heritage to be protected

The indiscriminate use of wood and consequent depletion of the world's forests is slowly but surely becoming a thing of the past.

In many areas of the world people are now aware that forests must be managed intelligently if wood is to be used as a raw material and balance the planet's oxygen needs at the same time.

As a result, special resource maintenance and reforestation programs are being carried out in many countries.

More and more, the only trees being cut down are the ones which have reached the end of their life cycle or whose continued growth could damage other trees.

Companies such as B&B Italia recognize these environmental problems and obtain the majority of their wood from such sources. Finishing paints are made of solvents with very low toxicity and pollutant levels. Once polymerisation has occurred (hardening or drying) these paints do not leave behind any harmful substances. All paints used in the various application cycles are made using patented systems, exclusively for B&B Italia by the leading European manufacturers of wood paint. Authorized laboratories test all such treated surfaces to guarantee that they possess the optimum physical, mechanical and toxicological properties. Please note that the naturally finished surfaces of the types of wood listed above may change colour upon exposure to light.

Descriptions and pictures of products included in this catalogue have an indicative value only and are not binding for products' use. B&B Italia reserves the right to modify their products without prior notification.

For further technical information of the products, please contact the authorised dealer closest to you (see www.bebitalia.com).